

## Current list of the Polish digger wasps

(Hymenoptera, Spheciformes)

Piotr Olszewski, Bogdan Wiśniowski & Toshko Ljubomirov

Olszewski, P., Wiśniowski, B. & Ljubomirov T. 2021. Current list of the Polish digger wasps (Hymenoptera, Spheciformes). Spixiana 44(1): 81-107.

The present study brings together the scattered knowledge on species of Spheciformes known from Poland. The study is based on available literature data, as well as unpublished information from the authors' and other private collections data since 2004. The list includes 247 species, with 243 taxa well documented and another 4 either doubtfully recorded or requiring further research. The following species have not been confirmed since 2004: *Alysson pertheesi* Gorski, 1852; *A. ratzeburgi* Dahlbom, 1843; *Ammoplanus hofferi* Šnoflák, 1943; *A. pragensis* Šnoflák, 1945; *Bembecinus hungaricus* (Fivaldszky, 1877); *Crabro lapponicus* Zetterstedt, 1838; *C. loewi* Dahlbom, 1845; *Crossocerus denticrus* Herrich-Schaeffer, 1841; *C. walkeri* (Shuckard, 1837); *Dryudella femoralis* (Mocsáry, 1877); *Ectemnius schlettereri* (Kohl, 1888); *Harpactus exiguus* (Handlirsch, 1888); *H. formosus* (Jurine, 1807); *Hoplisoides punctuosus* (Eversmann, 1849); *Mimesa crassipes* A. Costa, 1871; *M. vindobonensis* Maidl, 1914; *Mimumesa spooneri* (Richards, 1948); *Nitela fallax* Kohl, 1884; *Nysson variabilis* Chevrier, 1867; *Pemphredon flavistigma* Thomson, 1874; *P. mortifer* Valkeila, 1972; *P. podagrica* Chevrier, 1870; *Polemistus abnormis* (Kohl, 1888); *Spilomena curruca* (Dahlbom, 1843); *S. differens* Blüthgen, 1953; *S. mocsaryi* Kohl, 1898; *S. punctatissima* Blüthgen, 1953; *Trypoxylon kolazyi* Kohl, 1893 and *Prionyx subfuscatus* (Dahlbom, 1845). On the other hand, during 2004-2021 the following species were recorded for the first time for the Polish fauna: *Crossocerus subulatus* (Dahlbom, 1845); *Diodontus insidiosus* Spooner, 1938; *D. medius* Dahlbom, 1845; *Lindenius parkanensis* Zavadil, 1948; *Nysson distinguendus* Chevrier, 1867; *Nysson hrubanti* Balthasar, 1972; *Passaloecus pictus* Ribaut, 1952; *Psenulus chevrieri* (Tournier, 1889); *P. meridionalis* Beaumont, 1937; *Tachysphex austriacus* Kohl, 1892; *T. jokischianus* (Panzer, 1809); *T. nigripennis* (Spinola, 1808); *T. nobilis* (Straka 2016) and *Sceliphron caementarium* (Drury, 1773). In the present paper another five species are newly recorded from Poland, namely: *Ammoplanus gegen* Tsuneki, 1972; *A. kaszabi* Tsuneki, 1972; *Cerceris hortivaga* Kohl, 1880; *Crossocerus denticoxa* (Bischoff, 1932); and *Isodontia mexicana* (de Saussure, 1867). The publication also contains remarks to red list of threatened animals in Poland (Skibińska 2002).

Piotr Olszewski (corresponding author), Department of Ecology and Biogeography, Faculty of Biological and Veterinary Sciences, Nicolaus Copernicus University, Toruń, Lwowska 1, 87-100 Toruń, Poland; e-mail: thecla@wp.pl

Bogdan Wiśniowski, University of Rzeszów, Rejtana 16C, 35-959 Rzeszów, Poland; e-mail: bogdan.w@hotmail.com

Toshko Ljubomirov, Institute of Biodiversity and Ecosystem Research, Bulgarian Academy of Sciences, 1 Tzar Osvoboditel Boulevard, Sofia 1000, Bulgaria; e-mail: toshkoljubomirov@gmail.com

## Introduction

The first checklist of digger wasps in Poland was presented in the identification key of Noskiewicz and Puławski (1960) and consisted of 188 species. The next list of species was published in the fifth volume of the „Polish Checklist of Animals” elaborated by Celary (1997) it included 209 species. The third list of species known from Poland was given by Skibińska (2004), in which 233 species were catalogued. After that, an annotated checklist was published by Wiśniowski (2004). The list contained 225 species and depicted data for them in two temporal intervals (until 1945 and since 1945).

The following publication is an updated and commented list of digger wasps in Poland based on results of research published since 2004 (Bilański et al. 2012, Bilański et al. 2014, Bury et al. 2009, Dobosz 2010, Gwardjan & Celary 2020, Jaroszewicz 2012, Mader 2013, Miłkowski & Buchholz 2016, Olszewski 2014, Olszewski et al. 2013a, Olszewski et al. 2013b, Olszewski et al. 2013c, Olszewski et al. 2013d, Olszewski et al. 2016, Olszewski et al. 2017, Olszewski & Pawlikowski 2013, Olszewski & Wendzonka 2014, Olszewski et al. 2021a, Olszewski et al. 2021b, Pietraszko-Warchałowska & Warchałowski 2019, Straka 2016, Szymkiewicz & Szymkiewicz 2014, Tatur-Dytkowski 2015, Wendzonka & Żurawlew 2020, Wiśniowski et al. 2013, Zając et al. 2019, Zubeł & Celary 2019, Żyła 2019, Żyła & Huflejt 2020, Żurawlew & Butrym 2021, and Kosibowicz 2021).

The latest faunistic research was conducted in the Baltic Coast (Ciechanowski et al. 2008, Kowalczyk & Twerd 2011, Olszewski & Kowalczyk 2019), Małopolska Upland (Kowalczyk et al. 2008, Kowalczyk et al. 2011, Kowalczyk & Kurzac 2005, Kowalczyk & Nadolski 2007, Kowalczyk & Szczepko 2008a, Kowalczyk & Szczepko 2008b, Soszyński et al. 2008, Szczepko & Wiśniowski 2009), Mazovian Lowland (Kowalczyk & Kurzac 2007a, Kowalczyk & Kurzac 2007b, Kowalczyk & Kurzac 2009, Szczepko 2013, Wiśniowski & Szczepko 2013), Podlasie in the Poleski National Park (Wiśniowski & Piotrowski 2013), Pomeranian Lakeland (Ciechanowski et al. 2004, Kowalczyk 2004, Olszewski & Kowalczyk 2019), Wielkopolska-Kujawy Lowland (Kowalczyk et al. 2009a, Pawlikowski & Olszewski 2019, Twerd et al. 2017, Wendzonka 2011, Wendzonka 2012) and from various faunistic regions (Celary & Plewa 2014, Kowalczyk et al. 2009b, Sawoniewicz & Wiśniowski 2007).

Although recent research of Sann et al. (2018) presents a new classification of digger wasps based on a phylogenomic analysis of the Apoidea with ten separate families, the nomenclature and systematic arrangements in this publication was adopted in

accordance with ‘Catalog of Sphecidae’ sensu lato (Puławski 2021). The comments give mainly location data since 2004, assigned to relevant zoogeographical regions according to the ‘Polish Catalogue of Fauna’ (Banaszak 1980). Species within families and zoogeographical regions were sorted in alphabetical order.

In the following checklist five species are marked with a question mark (?). Three of them, namely *Harpactus formosus*, *Tachysphex jokischianus* and *T. nobilis*, need taxonomic verification of their status. Another species, *Isodontia mexicana*, was probably incidentally introduced by man, and *Sceliphron caementarium* was observed close to Ukrainian border, and is probably a recent immigrant from Ukraine. Still the occurrence of local populations of both species in Poland is possible.

Skibińska (2002) included 80 species of Spheciformes in ‘Red list of threatened animals in Poland’ (RL). Four of them were listed in category EX? (probably Extinct), four represented CR category (Critically Endangered), three species were in the category EN (Endangered), and eleven were classified as VU (Vulnerable). More species (34) represented the category NT (Near Threatened), and six were in the category LC (Least Concern). Another eighteen species were in DD category (Data Deficient).

In the present paper we present a verified list of threatened digger wasps in Poland, based on own observations as well as threat status in neighbouring countries. The current list includes 92 species. Among them there are ten Critically Endangered (CR) and six Endangered (EN). Another six species were classified as Vulnerable (VU); twelve species represent the category NT (Near Threatened), and 25 represent the category LC (Least Concern). The status DD (Data Deficient) was ascribed to 33 species because there is still inadequate information to make a more precise assessment of their threat status.

### The annotated list of Polish digger wasps (Hymenoptera, Spheciformes)

#### Family Ampulicidae

#### Genus *Dolichurus* Latreille, 1809

##### 1. *D. corniculus* (Spinola, 1807)

Recently, the species was recorded from Małopolska Upland (Kowalczyk et al. 2008, Kowalczyk & Nadolski 2007), Podlasie (B. Wiśniowski, unpublished data), Pomeranian Lakeland (Olszewski & Kowalczyk 2019) and Western Beskid (B. Wiśniowski, unpublished data).

RL: Current category of threat LC, previously NT (Skibińska 2002).

## Family Crabronidae

### Genus *Alysson* Panzer, 1806

#### 2. *A. pertheesi* Gorski, 1852

Old records only from the Sandomierz Basin (Noskiewicz & Puławski 1960) and Wielkopolska-Kujawy Lowland (Szulczewski 1947, 1950).

RL: Maintained category CR (Skibińska 2002).

#### 3. *A. ratzeburgi* Dahlbom, 1843

Only records from the Wielkopolska-Kujawy Lowland (Szulczewski 1950).

RL: Maintained category CR (Skibińska 2002).

#### 4. *A. spinosus* (Panzer, 1801)

New records from the Baltic Coast (Ciechanowski et al. 2008, Kowalczyk & Twerd 2011, Olszewski & Kowalczyk 2019), Małopolska Upland (Kowalczyk & Kurzac 2005, Kowalczyk & Szczepko 2008a), Masurian Lakeland (P. Olszewski, unpublished data), Mazovian Lowland (Kowalczyk & Kurzac 2007b, Szczepko 2013, Wiśniowski & Szczepko 2013), Pomeranian Lakeland (Ciechanowski et al. 2004, Olszewski & Kowalczyk 2019) and Wielkopolska-Kujawy Lowland (Pawlikowski & Olszewski 2019, Twerd et al. 2017).

### Genus *Ammoplanus* Giraud, 1869

#### 5. *A. gegen* Tsuneki, 1972

**First records from Poland;** recorded from the Kraków-Wieluń Upland: Ojców National Park (52°57'46"N, 18°34'12"E), 1 ♂ – 29 VI 1995, leg. B. Wiśniowski, and Małopolska Upland: Hebdów, 1 ♀ – 16-30 VI 2008, leg. B. Wiśniowski.

RL: Category of threat DD (not listed in Skibińska 2002).

#### 6. *A. hofferi* Šnoflák, 1943

Records only from vicinity of the Przemyśl (Krysiński 1956/1957).

RL: Maintained category DD (Skibińska 2002).

#### 7. *A. kaszabi* Tsuneki, 1972

**First record from Poland;** recorded from the Kraków-Wieluń Upland: Ojców National Park, 1 ♂ – 28 VI 2005, leg. V. Antonova.

RL: Category of threat DD (not listed in Skibińska 2002).

#### 8. *A. marathroicus* (De Stefani, 1887)

Since 2004 recorded from the Małopolska Upland (B. Wiśniowski, unpublished data).

RL: Maintained category LC (Skibińska 2002).

#### 9. *A. perrisi* Giraud, 1869

Since 2004 recorded from the Kraków-Wieluń Upland (B. Wiśniowski, unpublished data).

RL: Maintained category DD (Skibińska 2002).

#### 10. *A. pragensis* Šnoflák, 1945

Known from a single locality in the Kraków-Wieluń Upland (Wiśniowski 2002).

### Genus *Argogorytes* Ashmead, 1899

#### 11. *A. fargeii* (Shuckard, 1837)

Since 2004 recorded from the Małopolska Upland (Soszyński et al. 2008).

#### 12. *A. mystaceus* (Linnaeus, 1761)

Recently, the species was recorded from the Baltic Coast (Olszewski & Kowalczyk 2019), Małopolska Upland (Kowalczyk et al. 2008, Kowalczyk & Kurzac 2005, Kowalczyk & Nadolski 2007, Kowalczyk & Szczepko 2008a, Szczepko & Wiśniowski 2009), Mazovian Lowland (Kowalczyk & Kurzac 2007b, Szczepko 2013, Wiśniowski & Szczepko 2013), Pomeranian Lakeland (Kowalczyk 2004, Olszewski & Kowalczyk 2019) and Wielkopolska-Kujawy Lowland (Kowalczyk et al. 2009a, Twerd et al. 2017).

### Genus *Astata* Latreille, 1796

#### 13. *A. boops* (Schrank, 1781)

New records from the Baltic Coast (Ciechanowski et al. 2008, Kowalczyk & Twerd 2011, Olszewski & Kowalczyk 2019), Małopolska Upland (Kowalczyk & Nadolski 2007, Kowalczyk & Szczepko 2008a, Kowalczyk & Szczepko 2008b, Szczepko & Wiśniowski 2009), Masurian Lakeland (P. Olszewski, unpublished data), Mazovian Lowland (Kowalczyk & Kurzac 2007b, Kowalczyk & Kurzac 2009), Podlasie (Wiśniowski & Piotrowski 2013), Pomeranian Lakeland (Olszewski & Kowalczyk 2019) and Wielkopolska-Kujawy Lowland (Kowalczyk et al. 2009a, Twerd et al. 2017).

#### 14. *A. kashmirensis* Nurse, 1909

Recently, the species was recorded only from the Małopolska Upland (Olszewski et al. 2013d).

RL: Maintained category DD (Skibińska 2002).

#### 15. *A. minor* Kohl, 1885

Since 2004 known from the Baltic Coast, Pomeranian Lakeland (Olszewski & Kowalczyk 2019), Małopolska Upland (Kowalczyk et al. 2008, Kowalczyk & Kurzac 2005, Kowalczyk & Nadolski 2007, Szczepko & Wiśniowski 2009), Mazovian Lowland (Kowalczyk & Kurzac 2007b) and Wielkopolska-Kujawy Lowland (Twerd et al. 2017, Wendzonka 2011).

### Genus *Bembecinus* A. Costa, 1859

#### 16. *B. hungaricus* (Frivaldszky, 1877)

Only records from the Sandomierz Basin (Noskiewicz 1957).

RL: Current category of threat CR, previously NT (Skibińska 2002).

**17. *B. tridens* (Fabricius, 1781)**

New records from the Małopolska Upland (Kowalczyk et al. 2011, Kowalczyk & Szczepko 2008a, Kowalczyk & Szczepko 2008b) Masurian Lakeland (P. Olszewski, unpublished data), Mazovian Lowland (Szczepko 2013, Wiśniowski & Szczepko 2013), Podlasie (Wiśniowski & Piotrowski 2013) and Wielkopolska-Kujawy Lowland (Kowalczyk et al. 2009a, Pawlikowski & Olszewski 2019, Wendzonka 2012).

RL: Current category of threat LC, previously VU (Skibińska 2002).

**Genus *Bembix* Fabricius, 1775**

**18. *B. rostrata* (Linnaeus, 1758)**

New records from the Małopolska Upland (Kowalczyk et al. 2008, Kowalczyk et al. 2009b, Kowalczyk et al. 2011, Kowalczyk & Kurzac 2005, Kowalczyk & Szczepko 2008a, Kowalczyk & Szczepko 2008b, Soszyński et al. 2008, Szczepko & Wiśniowski 2009), Masurian Lakeland (P. Olszewski, unpublished data) Mazovian Lowland (Kowalczyk & Kurzac 2007b, Szczepko 2013, Wiśniowski & Szczepko 2013), Podlasie (Wiśniowski & Piotrowski 2013), Pomeranian Lakeland (Ciechanowski et al. 2004, Olszewski & Kowalczyk 2019) and Wielkopolska-Kujawy Lowland (Kowalczyk et al. 2009a, Pawlikowski & Olszewski 2019, Wendzonka 2012).

RL: Current category of threat LC, previously VU (Skibińska 2002).

**Genus *Brachystegus* A. Costa, 1859**

**19. *B. scalaris* (Illiger, 1807)**

New records from the Podlasie (L. Twerd, unpublished data). Recorded for the last time from Mazovian Lowland (Głowacki 1953).

RL: Current category of threat VU, previously EX? (Skibińska 2002).

**Genus *Cerceris* Latreille, 1802**

**20. *C. albofasciata* (Rossi, 1758)**

Reported from the Kraków by Łoziński (1920) and in Wiśniowski (2004) treated as 'most probably misidentification' due to known distribution in the southern regions of Palaearctics. The occurrence in Poland was confirmed in Lublin Upland: Krasnystaw, 1 ♀ – 18 VII 2013, leg. B. Wiśniowski, and Podlasie (L. Twerd, unpublished data).

RL: Maintained category DD (Skibińska 2002).

**21. *C. arenaria* (Linnaeus, 1758)**

New records from the Baltic Coast (Ciechanowski et al. 2008, Kowalczyk & Twerd 2011, Olszewski & Kowalczyk 2019), Małopolska Upland (Kowalczyk

et al. 2008, Kowalczyk & Kurzac 2005, Kowalczyk & Nadolski 2007, Kowalczyk & Szczepko 2008a, Szczepko & Wiśniowski 2009), Masurian Lakeland (P. Olszewski, unpublished data), Mazovian Lowland (Kowalczyk & Kurzac 2007b, Kowalczyk & Kurzac 2009, Szczepko 2013, Wiśniowski & Szczepko 2013), Podlasie (Wiśniowski & Piotrowski 2013) and Wielkopolska-Kujawy Lowland (Kowalczyk et al. 2009a, Pawlikowski & Olszewski 2019, Twerd et al. 2017, Wendzonka 2011).

**22. *C. flavilabris* (Fabricius, 1793)**

Since 2004 known from the Małopolska Upland (Kowalczyk & Kurzac 2007b, Soszyński et al. 2008), Mazovian Lowland (Kowalczyk & Kurzac 2007b) and Wielkopolska-Kujawy Lowland (Twerd et al. 2017).

RL: Maintained category NT (Skibińska 2002).

**23. *C. hortivaga* Kohl, 1880**

**First records from Poland;** recorded from the Eastern Beskid Mts: Magurski National Park, Ożenna, 1 ♂ – 3 VIII 2006, leg. B. Wiśniowski; Kraków-Wieluń Upland: Rzędkowice Rocks, 1 ♂ – 28 VI 2011, leg. B. Wiśniowski; Lublin Upland: Krasnystaw, 4 ♀♀ and 1 ♂ – 18 VII 2013, leg. B. Wiśniowski; Małopolska Upland: 'Góry Pieprzowe' nature reserve by Sandomierz, 2 ♀♀ – 17 VII 2008, leg. B. Wiśniowski; Roztocze: Józefów vicinity, 1 ♀ and 2 ♂♂ – 7 VII 2006, leg. B. Wiśniowski.

**24. *C. interrupta* (Panzer, 1799)**

Recently, the species was recorded from the Małopolska Upland (Kowalczyk et al. 2008, Kowalczyk & Szczepko 2008b, Szczepko & Wiśniowski 2009), Masurian Lakeland (P. Olszewski, unpublished data), Mazovian Lowland (Kowalczyk & Kurzac 2007b, Kowalczyk & Kurzac 2009, Szczepko 2013, Wiśniowski & Szczepko 2013), Podlasie (Wiśniowski & Piotrowski 2013) and Wielkopolska-Kujawy Lowland (Kowalczyk et al. 2009a, Twerd et al. 2017, Wendzonka 2011).

**25. *C. quadricincta* (Panzer, 1799)**

Since 2004 recorded only from Kraków-Wieluń Upland (B. Wiśniowski, unpublished data).

Remarks: Kowalczyk & Szczepko (2008b) gave an erroneous faunistic record for Łódź; in fact, the species belongs to *C. quadrifasciata*.

RL: Current category of threat DD, previously NT (Skibińska 2002).

**26. *C. quadrifasciata* (Panzer, 1799)**

Since 2004 known from the Baltic Coast, Pomeranian Lakeland (Olszewski & Kowalczyk 2019), Małopolska Upland (Kowalczyk & Szczepko 2008a), Mazovian Lowland (Kowalczyk & Kurzac 2007b, Kowalczyk & Kurzac 2009, Szczepko 2013,

Wiśniowski & Szczepko 2013) and Wielkopolska-Kujawy Lowland (Pawlikowski & Olszewski 2019).

**27. *C. quinquefasciata* (Rossi, 1792)**

New records from the Baltic Coast (Ciechanowski et al. 2008, Kowalczyk & Twerd 2011, Olszewski & Kowalczyk 2019), Małopolska Upland (Kowalczyk et al. 2008, Kowalczyk & Kurzac 2005, Kowalczyk & Nadolski 2007, Kowalczyk & Szczepko 2008a, Kowalczyk & Szczepko 2008b, Szczepko & Wiśniowski 2009) Masurian Lakeland (P. Olszewski, unpublished data), Mazovian Lowland (Kowalczyk & Kurzac 2007b, Kowalczyk & Kurzac 2009, Kowalczyk & Nodolski 2007, Szczepko 2013, Wiśniowski & Szczepko 2013), Podlasie (Wiśniowski & Piotrowski 2013), Pomeranian Lakeland (Ciechanowski et al. 2004, Olszewski & Kowalczyk 2019) and Wielkopolska-Kujawy Lowland (Kowalczyk et al. 2009a, Pawlikowski & Olszewski 2019, Twerd et al. 2017, Wendzonka 2011, Wendzonka 2012).

**28. *C. ruficornis* (Fabricius, 1793)**

Recently, the species was recorded from the Baltic Coast, Pomeranian Lakeland (Olszewski & Kowalczyk 2019), Małopolska Upland (Kowalczyk et al. 2008, Kowalczyk et al. 2011, Kowalczyk & Szczepko 2008b, Soszyński et al. 2008, Szczepko & Wiśniowski 2009), Mazovian Lowland (Kowalczyk & Kurzac 2007b, Kowalczyk & Kurzac 2009) and Wielkopolska-Kujawy Lowland (Wendzonka 2011).

RL: Current category of threat LC, previously VU (Skibińska 2002).

**29. *C. rybyensis* (Linnaeus, 1771)**

New records from the Baltic Coast (Ciechanowski et al. 2008, Kowalczyk & Twerd 2011, Olszewski & Kowalczyk 2019), Małopolska Upland (Kowalczyk et al. 2008, Kowalczyk & Kurzac 2005, Kowalczyk & Nadolski 2007, Kowalczyk & Szczepko 2008a, Kowalczyk & Szczepko 2008b, Szczepko & Wiśniowski 2009, 2010), Masurian Lakeland (P. Olszewski, unpublished data), Mazovian Lowland (Kowalczyk & Kurzac 2007b, Kowalczyk & Kurzac 2009, Szczepko 2013, Wiśniowski & Szczepko 2013), Podlasie (Wiśniowski & Piotrowski 2013), Pomeranian Lakeland (Olszewski & Kowalczyk 2019) and Wielkopolska-Kujawy Lowland (Kowalczyk et al. 2009a, Pawlikowski & Olszewski 2019, Twerd et al. 2017, Wendzonka 2011).

**30. *C. sabulosa* (Panzer, 1799)**

Since 2004 known from the Małopolska Upland (J. Bąk-Badowska and B. Wiśniowski, unpublished data) and Wielkopolska-Kujawy Lowland (D. Zimmermann and B. Wiśniowski, unpublished data).

RL: Maintained category NT (Skibińska 2002).

**Genus *Crabro* Fabricius, 1775**

**31. *C. cribrarius* (Linnaeus, 1758)**

New records from the Baltic Coast (Ciechanowski et al. 2008, Kowalczyk & Twerd 2011, Olszewski & Kowalczyk 2019), Małopolska Upland (Celary & Plewa 2014, Kowalczyk et al. 2008, Kowalczyk & Kurzac 2005, Kowalczyk & Nadolski 2007, Kowalczyk & Szczepko 2008a, Szczepko & Wiśniowski 2009), Masurian Lakeland (P. Olszewski, unpublished data), Mazovian Lowland (Kowalczyk & Kurzac 2007b, Kowalczyk & Kurzac 2009, Szczepko 2013, Wiśniowski & Szczepko 2013), Podlasie (Wiśniowski & Piotrowski 2013), Pomeranian Lakeland (Ciechanowski et al. 2004, Olszewski & Kowalczyk 2019) and Wielkopolska-Kujawy Lowland (Kowalczyk et al. 2009a, Pawlikowski & Olszewski 2019, Twerd et al. 2017).

**32. *C. ingricus* (F. Morawitz, 1888)**

Recently, the species was recorded only from the Mazovian Lowland (Kowalczyk & Kurzac 2009, Szczepko 2013, Wiśniowski & Szczepko 2013).

RL: Maintained category NT (Skibińska 2002).

**33. *C. lapponicus* Zetterstedt, 1838**

Not recorded after Wiśniowski (2004).

RL: Current category of threat DD, previously LC (Skibińska 2002).

**34. *C. loewi* Dahlbom, 1845**

Only old records from the Mazovian Lowland (Skibińska 1982, 1986).

RL: Current category of threat CR, previously NT (Skibińska 2002).

**35. *C. peltarius* (Schreber, 1784)**

New records from the Baltic Coast (Ciechanowski et al. 2008, Kowalczyk & Twerd 2011, Olszewski & Kowalczyk 2019), Małopolska Upland (Kowalczyk et al. 2008, Kowalczyk & Kurzac 2005, Kowalczyk & Szczepko 2008a, Szczepko & Wiśniowski 2009, 2010), Masurian Lakeland (P. Olszewski, unpublished data), Mazovian Lowland (Kowalczyk & Kurzac 2007b, Szczepko 2013, Wiśniowski & Szczepko 2013), Pomeranian Lakeland (Olszewski & Kowalczyk 2019) and Wielkopolska-Kujawy Lowland (Kowalczyk et al. 2009a, Pawlikowski & Olszewski 2019, Twerd et al. 2017).

**36. *C. scutellatus* (Scheven, 1781)**

Recently, the species was recorded from the Baltic Coast (Olszewski & Kowalczyk 2019), Małopolska Upland (Kowalczyk et al. 2008, Kowalczyk & Szczepko 2008a, Kowalczyk & Szczepko 2008b, Szczepko & Wiśniowski 2009), Mazovian Lowland (Kowalczyk & Kurzac 2007b, Kowalczyk & Kurzac 2009, Szczepko 2013, Wiśniowski & Szczepko 2013)

and Wielkopolska-Kujawy Lowland (Kowalczyk et al. 2009a, Twerd et al. 2017, Wendzonka 2012).

**Genus *Crossocerus***

**Lepeletier de Saint-Fargeau & Brullé, 1834**

**37. *C. annulipes* (Lepeletier de Saint-Fargeau & Brullé, 1835)**

Since 2004 known from the Baltic Coast (Ciechanowski et al. 2008, Olszewski & Kowalczyk 2019), Białowieża Primeval Forest (Celary & Plewa 2014), Małopolska Upland (Kowalczyk et al. 2008, Kowalczyk & Kurzac 2005, Kowalczyk & Nadolski 2007, Kowalczyk & Szczepko 2008b, Sawoniewicz & Wiśniowski 2007, Szczepko & Wiśniowski 2009), Mazovian Lowland (Kowalczyk & Kurzac 2007b, Szczepko 2013, Wiśniowski & Szczepko 2013), Podlasie (Sawoniewicz & Wiśniowski 2007) and Wielkopolska-Kujawy Lowland (P. Olszewski, unpublished data).

**38. *C. assimilis* (F. Smith, 1856)**

New records from the Baltic Coast (Olszewski & Kowalczyk 2019), Małopolska Upland (Kowalczyk & Kurzac 2005), Mazovian Lowland (Kowalczyk & Kurzac 2007b) and Pomeranian Lakeland (Kowalczyk 2004, Olszewski & Kowalczyk 2019).

**39. *C. barbipes* (Dahlbom, 1845)**

Recently, the species was recorded from the Białowieża Primeval Forest (Celary & Plewa 2014).

RL: Current category of threat DD, previously NT (Skibińska 2002).

**40. *C. binotatus* Lepeletier de Saint-Fargeau & Brullé, 1835**

Since 2004 known from the Baltic Coast, Pomeranian Lakeland (Olszewski & Kowalczyk 2019), Małopolska Upland (Kowalczyk & Kurzac 2005, Kowalczyk & Szczepko 2008a), and Mazovian Lowland (Kowalczyk & Kurzac 2007b, Szczepko 2013, Wiśniowski & Szczepko 2013).

**41. *C. capitosus* (Shuckard, 1837)**

New records from the Małopolska Upland (Kowalczyk & Kurzac 2005) and Mazovian Lowland (Kowalczyk & Kurzac 2007b, Szczepko 2013, Wiśniowski & Szczepko 2013).

**42. *C. cetratus* (Shuckard, 1837)**

Recently, the species was recorded from the Baltic Coast (Kowalczyk & Twerd 2011, Olszewski & Kowalczyk 2019), Małopolska Upland (Kowalczyk et al. 2008, Kowalczyk & Kurzac 2005, Kowalczyk & Szczepko 2008a, Kowalczyk & Szczepko 2008b, Szczepko & Wiśniowski 2009), Mazovian Lowland (Kowalczyk & Kurzac 2007b, Sawoniewicz & Wiśniowski 2007), Pomeranian Lakeland (Ko-

walczyk 2004, Olszewski & Kowalczyk 2019) and Wielkopolska-Kujawy Lowland (Twerd et al. 2017).

**43. *C. cinxius* (Dahlbom, 1838)**

Since 2004 known from the Kraków-Wieluń Upland (Sawoniewicz & Wiśniowski 2007), Małopolska Upland (Kowalczyk & Kurzac 2005, Kowalczyk & Nadolski 2007, Kowalczyk & Szczepko 2008a) and Mazovian Lowland (Kowalczyk & Kurzac 2007b).

RL: Current category of threat LC, previously NT (Skibińska 2002).

**44. *C. congener* (Dahlbom, 1844)**

New records from the Baltic Coast, Pomeranian Lakeland (Olszewski & Kowalczyk 2019), Mazovian Lowland (Kowalczyk & Kurzac 2007b) and Podlasie (Wiśniowski & Piotrowski 2013).

RL: Current category of threat LC, previously NT (Skibińska 2002).

**45. *C. denticoxa* (Bischoff, 1932)**

**First record from Poland;** recorded from the Wielkopolska-Kujawy Lowland: Poznań, botanical garden, 1 ♀ – 1 VI 2003, leg. H. Piekarska-Boniecka.

RL: Category of threat DD (not listed in Skibińska 2002).

**46. *C. denticrus* Herrich-Schaeffer, 1841**

Not recorded after Wiśniowski (2004).

RL: Maintained category VU (Skibińska 2002).

**47. *C. dimidiatus* (Fabricius, 1781)**

Recently, the species was recorded from the Małopolska Upland (Kowalczyk et al. 2008, Kowalczyk & Szczepko 2008a, Szczepko & Wiśniowski 2009), Mazovian Lowland (Kowalczyk & Kurzac 2007b, Szczepko 2013, Wiśniowski & Szczepko 2013) and Pomeranian Lakeland (Olszewski & Kowalczyk 2019).

**48. *C. distinguendus* (A. Morawitz, 1866)**

Since 2004 known from the Baltic Coast (Kowalczyk & Twerd 2011, Olszewski & Kowalczyk 2019), Małopolska Upland (Kowalczyk et al. 2008, Kowalczyk & Kurzac 2005, Szczepko & Wiśniowski 2009), Masurian Lakeland, Pomeranian Lakeland (P. Olszewski, unpublished data) and Mazovian Lowland (Kowalczyk & Kurzac 2007b, Szczepko 2013, Wiśniowski & Szczepko 2013).

**49. *C. elongatulus* (Vander Linden, 1829)**

New records from the Baltic Coast (Kowalczyk & Twerd 2011, Olszewski & Kowalczyk 2019), Małopolska Upland (Kowalczyk et al. 2008, Kowalczyk & Kurzac 2005, Kowalczyk & Szczepko 2008a, Szczepko & Wiśniowski 2009), Mazovian Lowland (Kowalczyk & Kurzac 2007b, Szczepko 2013, Wiśniowski & Szczepko 2013) and Wielkopolska-Kujawy Lowland (P. Olszewski, unpublished data).

**50. *C. exiguus* (Vander Linden, 1829)**

Recently, the species was recorded from Baltic Coast (Kowalczyk & Twerd 2011, Olszewski & Kowalczyk 2019), Małopolska Upland (Kowalczyk & Kurzac 2005, Kowalczyk & Szczepko 2008b, Szczepko & Wiśniowski 2009), Mazovian Lowland (Kowalczyk & Kurzac 2007b, Szczepko 2013, Wiśniowski & Szczepko 2013), Pomeranian Lakeland (Olszewski & Kowalczyk 2019) and Wielkopolska-Kujawy Lowland (P. Olszewski, unpublished data).

**51. *C. heydeni* Kohl, 1880**

Since 2004 recorded from the Baltic Coast (Olszewski & Kowalczyk 2019), Podlasie and Western Beskid (B. Wiśniowski, unpublished data).

Remarks: Wiśniowski & Kowalczyk (1998a) gave an erroneous faunistic region of Poland – Pomeranian Lakeland; in fact, the species was collected in Poland for the first time in ‘Zajęcze Wzgórze’ nature reserve (Sopot), which is located at the Baltic Coast.

RL: Maintained category DD (Skibińska 2002).

**52. *C. leucostoma* (Linnaeus, 1758)**

New records from the Wielkopolska-Kujawy Lowland (P. Olszewski, unpublished data).

**53. *C. megacephalus* (Rossi, 1790)**

Recently, the species was recorded from the Baltic Coast (Olszewski & Kowalczyk 2019), Małopolska Upland (Kowalczyk & Kurzac 2005, Kowalczyk & Szczepko 2008a), Mazovian Lowland (Kowalczyk & Kurzac 2007b, Szczepko 2013, Wiśniowski & Szczepko 2013), Podlasie (Wiśniowski & Piotrowski 2013), Pomeranian Lakeland (Kowalczyk 2004, Olszewski & Kowalczyk 2019) and Wielkopolska-Kujawy Lowland (P. Olszewski, unpublished data).

**54. *C. nigritus* Lepeletier de Saint-Fargeau & Brullé, 1835**

New records from the Baltic Coast, Pomeranian Lakeland (Olszewski & Kowalczyk 2019), Małopolska Upland (Kowalczyk et al. 2008, Kowalczyk & Kurzac 2005, Szczepko & Wiśniowski 2009), Masurian Lakeland, Wielkopolska-Kujawy Lowland (P. Olszewski, unpublished data), Mazovian Lowland (Kowalczyk & Kurzac 2007b, Szczepko 2013, Wiśniowski & Szczepko 2013) and Podlasie (Wiśniowski & Piotrowski 2013).

**55. *C. ovalis* Lepeletier de Saint-Fargeau & Brullé, 1835**

Since 2004 recorded from the Baltic Coast, Pomeranian Lakeland (Olszewski & Kowalczyk 2019), Małopolska Upland (Kowalczyk & Kurzac 2005, Kowalczyk & Szczepko 2008a), Masurian Lakeland (P. Olszewski, unpublished data) and Mazovian Lowland (Kowalczyk & Kurzac 2007b).

**56. *C. palmipes* (Linnaeus, 1767)**

New records from the Baltic Coast (Olszewski & Kowalczyk 2019), Małopolska Upland (Kowalczyk & Nadolski 2007, Kowalczyk & Szczepko 2008a, Kowalczyk & Szczepko 2008b), Masurian Lakeland, Pomeranian Lakeland (P. Olszewski, unpublished data), Podlasie and Roztocze (B. Wiśniowski, unpublished data).

**57. *C. podagricus* (Vander Linden, 1829)**

Recently, the species was recorded from the Baltic Coast (Kowalczyk & Twerd 2011, Olszewski & Kowalczyk 2019), Małopolska Upland (Kowalczyk & Kurzac 2005), Pomeranian Lakeland (Kowalczyk 2004, Olszewski & Kowalczyk 2019) and Wielkopolska-Kujawy Lowland (P. Olszewski, unpublished data).

**58. *C. pullulus* (A. Morawitz, 1866)**

Since 2004 recorded from the Baltic Coast (Olszewski & Kowalczyk 2019) and Wielkopolska-Kujawy Lowland (B. Wiśniowski, unpublished data).

RL: Current category of threat NT, previously VU (Skibińska 2002).

**59. *C. quadrimaculatus* (Fabricius, 1793)**

Since 2004 listed from the Baltic Coast (Ciechanowski et al. 2008, Olszewski & Kowalczyk 2019), Małopolska Upland (Kowalczyk et al. 2008, Kowalczyk & Kurzac 2005, Kowalczyk & Nadolski 2007, Kowalczyk & Szczepko 2008a, Kowalczyk & Szczepko 2008b, Szczepko & Wiśniowski 2009), Masurian Lakeland (P. Olszewski, unpublished data), Mazovian Lowland (Kowalczyk & Kurzac 2007b, Kowalczyk & Kurzac 2009, Szczepko 2013, Wiśniowski & Szczepko 2013), Pomeranian Lakeland (Olszewski & Kowalczyk 2019) and Wielkopolska-Kujawy Lowland (Kowalczyk et al. 2009a).

**60. *C. styrius* (Kohl, 1892)**

New record from the Baltic Coast (Olszewski & Kowalczyk 2019), Małopolska Upland (Szczepko & Wiśniowski 2009) and Masurian Lakeland (Olszewski 2014).

RL: Current category of threat DD, previously NT (Skibińska 2002).

**61. *C. subulatus* (Dahlbom, 1845)**

Recently recorded from Poland in Podlasie region and Białowieża Forest (Żyła & Huflejt 2020).

**62. *C. tarsatus* (Shuckard, 1837)**

The species was recorded recently from the Baltic Coast (Olszewski & Kowalczyk 2019), Małopolska Upland (Kowalczyk et al. 2008, Kowalczyk & Kurzac 2005, Szczepko & Wiśniowski 2009), Mazovian Lowland (Kowalczyk & Kurzac 2007b), Pomeranian Lakeland (Olszewski & Kowalczyk 2019), Małopolska Upland (Kowalczyk & Kurzac 2005, Kowalczyk & Szczepko 2008a), Masurian Lakeland (P. Olszewski, unpublished data) and Mazovian Lowland (Kowalczyk & Kurzac 2007b).

nian Lakeland and Wielkopolska-Kujawy Lowland (P. Olszewski, unpublished data).

RL: Current category of threat LC, previously NT (Skibińska 2002).

**63. *C. vagabundus* (Panzer, 1798)**

New records from the Baltic Coast, Pomeranian Lakeland (Olszewski & Kowalczyk 2019), Małopolska Upland (Kowalczyk & Szczepko 2008a, Kowalczyk & Szczepko 2008b), Masurian Lakeland (P. Olszewski, unpublished data), Mazovian Lowland (Kowalczyk & Kurzac 2007b) and Podlasie (B. Wiśniowski, unpublished data).

**64. *C. varus* Lepeletier de Saint-Fargeau & Brullé, 1835**

New records from the Baltic Coast, Pomeranian Lakeland (Olszewski & Kowalczyk 2019) and Wielkopolska-Kujawy Lowland (Wendzonka 2011).

Remarks: *C. pusillus* synonymized with *C. varus* by Bitsch & Leclercq (1993: 297).

**65. *C. walkeri* (Shuckard, 1837)**

Not recorded after Wiśniowski (2004).

RL: Current category of threat EN, previously LC (Skibińska 2002).

**66. *C. wesmaeli* (Vander Linden, 1829)**

Recently, the species was recorded from the Baltic Coast, Pomeranian Lakeland (Ciechanowski et al. 2004, Olszewski & Kowalczyk 2019), Małopolska Upland (Kowalczyk et al. 2008, Kowalczyk & Kurzac 2005, Kowalczyk & Szczepko 2008a, Szczepko & Wiśniowski 2009), Masurian Lakeland (P. Olszewski, unpublished data), Mazovian Lowland (Kowalczyk & Kurzac 2007b, Kowalczyk & Kurzac 2009, Szczepko 2013, Wiśniowski & Szczepko 2013) and Wielkopolska-Kujawy Lowland (Pawlikowski & Olszewski 2019).

**Genus *Didineis* Wesmael, 1852**

**67. *D. lunicornis* (Fabricius, 1798)**

New records from the Baltic Coast (Kowalczyk 2006, Kowalczyk & Twerd 2011, Olszewski & Kowalczyk 2019), Małopolska Upland (Kowalczyk & Szczepko 2008b) and Mazovian Lowland (Kowalczyk & Kurzac 2007b, Wiśniowski & Szczepko 2013, Szczepko 2013).

RL: Maintained category NT (Skibińska 2002).

**Genus *Dinetus* Panzer, 1806**

**68. *D. pictus* (Fabricius, 1793)**

New records from the Baltic Coast (Kowalczyk & Twerd 2011, Olszewski & Kowalczyk 2019), Małopolska Upland (Kowalczyk et al. 2008, Kowalczyk & Kurzac 2005, Kowalczyk & Nadolski 2007,

Kowalczyk & Szczepko 2008a, Szczepko & Wiśniowski 2009), Masurian Lakeland, Pomeranian Lakeland (P. Olszewski, unpublished data), Mazovian Lowland (Kowalczyk & Kurzac 2007b, Kowalczyk & Kurzac 2009, Szczepko 2013, Wiśniowski & Szczepko 2013), Podlasie (Wiśniowski & Piotrowski 2013) and Wielkopolska-Kujawy Lowland (Kowalczyk et al. 2009a, Wendzonka 2011, Wendzonka 2012).

**Genus *Diodontus* Curtis, 1834**

**69. *D. insidiosus* Spooner, 1938**

The species was first recorded in Poland found in the Małopolska Upland (Olszewski et al. 2016).

RL: Category of threat DD (not listed in Skibińska 2002).

**70. *D. luperus* Shuckard, 1837**

New records from the Baltic Coast (Kowalczyk & Twerd 2011, Olszewski & Kowalczyk 2019) and Wielkopolska-Kujawy Lowland (Twerd et al. 2017).

**71. *D. medius* Dahlbom, 1845**

The species was first recorded in Poland found in the Pomeranian Lakeland (Olszewski et al. 2016, Olszewski & Kowalczyk 2019).

RL: Category of threat DD (not listed in Skibińska 2002).

**72. *D. minutus* (Fabricius, 1793)**

New records from the Baltic Coast (Kowalczyk & Twerd 2011, Olszewski & Kowalczyk 2019), Małopolska Upland (Kowalczyk et al. 2008, Kowalczyk & Kurzac 2005, Kowalczyk & Nadolski 2007, Kowalczyk & Szczepko 2008a, Szczepko & Wiśniowski 2009), Masurian Lakeland, Pomeranian Lakeland (P. Olszewski, unpublished data), Mazovian Lowland (Kowalczyk & Kurzac 2007b, Kowalczyk & Kurzac 2009, Szczepko 2013, Wiśniowski & Szczepko 2013), Podlasie (Wiśniowski & Piotrowski 2013) and Wielkopolska-Kujawy Lowland (Kowalczyk et al. 2009a, Pawlikowski & Olszewski 2019, Twerd et al. 2017, Wendzonka 2011).

**73. *D. tristis* (Vander Linden, 1829)**

New records from the Małopolska Upland (Kowalczyk et al. 2008, Kowalczyk & Szczepko 2008a, Kowalczyk & Szczepko 2008b, Szczepko & Wiśniowski 2009), Masurian Lakeland, Pomeranian Lakeland (P. Olszewski, unpublished data), Mazovian Lowland (Kowalczyk & Kurzac 2007b, Szczepko 2013, Wiśniowski & Szczepko 2013) and Wielkopolska-Kujawy Lowland (Kowalczyk et al. 2009a, Twerd et al. 2017).



## Genus *Dryudella* Spinola, 1843

### 74. *D. femoralis* (Mocsáry, 1877)

Not recorded after Wiśniowski (2004).

RL: Current category of threat DD, previously NT (Skibińska 2002).

### 75. *D. pinguis* (Dahlbom, 1832)

Recently, the species was recorded from the Baltic Coast (Olszewski & Kowalczyk 2019), Mazovian Lowland (Szczepko 2013, Wiśniowski & Szczepko 2013) and Wielkopolska-Kujawy Lowland (Pawlikowski & Olszewski 2019).

RL: Current category of threat LC, previously NT (Skibińska 2002).

### 76. *D. stigma* (Panzer, 1809)

New records from the Baltic Coast (Kowalczyk & Twerd 2011, Olszewski & Kowalczyk 2019), Małopolska Upland (Kowalczyk et al. 2008, Kowalczyk & Szczepko 2008b, Kowalczyk & Kurzac 2005, Kowalczyk & Nadolski 2007, Kowalczyk & Szczepko 2008a, Szczepko & Wiśniowski 2009), Masurian Lakeland (Olszewski et al. 2021b), Mazovian Lowland (Kowalczyk & Kurzac 2007b, Kowalczyk & Kurzac 2009, Szczepko 2013, Wiśniowski & Szczepko 2013) and Wielkopolska-Kujawy Lowland (Kowalczyk et al. 2009a, Pawlikowski & Olszewski 2019, Twerd et al. 2017).

## Genus *Ectemnius* Dahlbom, 1845

### 77. *E. borealis* (Zetterstedt, 1838)

Since 2004 known from the Podlasie (Wiśniowski & Piotrowski 2013), Pomeranian Lakeland (Kowalczyk 2004, Olszewski & Kowalczyk 2019) and Western Beskid (B. Wiśniowski, unpublished data).

### 78. *E. cavifrons* (Thomson, 1870)

New records from the Baltic Coast (Olszewski & Kowalczyk 2019), Mazovian Lowland (Kowalczyk & Kurzac 2007b, Szczepko 2013, Wiśniowski & Szczepko 2013), Małopolska Upland (Kowalczyk et al. 2008, Kowalczyk & Kurzac 2005, Kowalczyk & Szczepko 2008a, Kowalczyk & Szczepko 2008b, Szczepko & Wiśniowski 2009), Podlasie (Celary & Plewa 2014), Pomeranian Lakeland (Kowalczyk 2004, Olszewski & Kowalczyk 2019) and Wielkopolska-Kujawy Lowland (P. Olszewski, unpublished data).

### 79. *E. cephalotes* (Olivier, 1792)

The species was recorded recently from the Mazovian Lowland (Szczepko 2013, Wiśniowski & Szczepko 2013), Małopolska Upland (Celary & Plewa 2014, Kowalczyk et al. 2008, Kowalczyk & Kurzac 2005, Kowalczyk & Nadolski 2007, Kowal-

czyk & Szczepko 2008a, Kowalczyk & Szczepko 2008b, Szczepko & Wiśniowski 2009) and Mazovian Lowland (Kowalczyk & Kurzac 2007b).

### 80. *E. confinis* (Walker, 1871)

Since 2004 known from the Małopolska Upland (Olszewski et al. 2013d) and Wielkopolska-Kujawy Lowland (Twerd et al. 2017).

### 81. *E. continuus* (Fabricius, 1804)

The species was recorded recently from the Baltic Coast (Kowalczyk & Twerd 2011, Olszewski & Kowalczyk 2019), Małopolska Upland (Celary & Plewa 2014, Kowalczyk et al. 2008, Kowalczyk & Kurzac 2005, Kowalczyk & Nadolski 2007, Kowalczyk & Szczepko 2008a, Kowalczyk & Szczepko 2008b, Szczepko & Wiśniowski 2009), Masurian Lakeland (P. Olszewski, unpublished data), Mazovian Lowland (Kowalczyk & Kurzac 2007b, Kowalczyk & Kurzac 2009, Szczepko 2013, Wiśniowski & Szczepko 2013), Podlasie (Wiśniowski & Piotrowski 2013), Pomeranian Lakeland (Ciechanowski et al. 2004, Olszewski & Kowalczyk 2019) and Wielkopolska-Kujawy Lowland (Kowalczyk et al. 2009a, Pawlikowski & Olszewski 2019, Twerd et al. 2017).

### 82. *E. dives* (Lepelletier de Saint-Fargeau & Brullé, 1835)

Since 2004 listed from the Baltic Coast (Kowalczyk & Twerd 2011, Olszewski & Kowalczyk 2019), Małopolska Upland (Kowalczyk et al. 2008, Kowalczyk & Kurzac 2005, Kowalczyk & Nadolski 2007, Szczepko & Wiśniowski 2009), Masurian Lakeland (P. Olszewski, unpublished data), Mazovian Lowland (Kowalczyk & Kurzac 2007b, Szczepko 2013, Wiśniowski & Szczepko 2013), Podlasie (Wiśniowski & Piotrowski 2013), Pomeranian Lakeland (Olszewski & Kowalczyk 2019) and Wielkopolska-Kujawy Lowland (Kowalczyk et al. 2009a, Twerd et al. 2017).

### 83. *E. fossorius* (Linnaeus, 1758)

New records from the Baltic Coast (Kowalczyk & Twerd 2011, Olszewski & Kowalczyk 2019), Masurian Lakeland, Wielkopolska-Kujawy Lowland (Olszewski & Wendzonka 2014) and Podlasie (Olszewski et al. 2013d).

RL: Current category of threat VU, previously CR (Skibińska 2002).

### 84. *E. guttatus* (Vander Linden, 1829)

Recently, the species was recorded from the Małopolska Upland (Kowalczyk et al. 2008, Kowalczyk & Nadolski 2007, Szczepko & Wiśniowski 2009), Masurian Lakeland (P. Olszewski, unpublished data) and Wielkopolska-Kujawy Lowland (Celary & Plewa 2014).

**85. *E. lapidarius* (Panzer, 1804)**

Since 2004 recorded from the Baltic Coast (Kowalczyk & Twerd 2011, Olszewski & Kowalczyk 2019), Małopolska Upland (Kowalczyk et al. 2008, Kowalczyk & Kurzac 2005, Kowalczyk & Nadolski 2007, Kowalczyk & Szczepko 2008a, Kowalczyk & Szczepko 2008b, Szczepko & Wiśniowski 2009), Masurian Lakeland (P. Olszewski, unpublished data), Mazovian Lowland (Kowalczyk & Kurzac 2007b, Kowalczyk & Kurzac 2009, Szczepko 2013, Wiśniowski & Szczepko 2013), Podlasie (Wiśniowski & Piotrowski 2013), Pomeranian Lakeland (Olszewski & Kowalczyk 2019) and Wielkopolska-Kujawy Lowland (Pawlikowski & Olszewski 2019).

**86. *E. lituratus* (Panzer, 1804)**

Since 2004 recorded from the Małopolska Upland and Western Beskid (B. Wiśniowski, unpublished data).

**87. *E. rubicola* (Dufour & Perris, 1840)**

New records from the Baltic Coast (Olszewski & Kowalczyk 2019), Małopolska Upland (Kowalczyk & Nadolski 2007, Kowalczyk & Szczepko 2008a), Masurian Lakeland (P. Olszewski, unpublished data), Mazovian Lowland (Kowalczyk & Kurzac 2007b, Szczepko 2013, Wiśniowski & Szczepko 2013), Pomeranian Lakeland (Ciechanowski et al. 2004, Olszewski & Kowalczyk 2019) and Wielkopolska-Kujawy Lowland (Twerd et al. 2017).

**88. *E. ruficornis* (Zetterstedt, 1838)**

Since 2004 known from the Baltic Coast (Kowalczyk & Twerd 2011, Olszewski & Kowalczyk 2019), Małopolska Upland (Kowalczyk et al. 2008, Kowalczyk & Nadolski 2007, Kowalczyk & Szczepko 2008a, Szczepko & Wiśniowski 2009), Mazovian Lowland (Kowalczyk & Kurzac 2007b, Kowalczyk & Kurzac 2009) and Pomeranian Lakeland (Ciechanowski et al. 2004, Olszewski & Kowalczyk 2019).

**89. *E. rugifer* (Dahlbom, 1845)**

Since 2004 recorded from the Lower Silesia (B. Wiśniowski, unpublished data).

RL: Maintained category NT (Skibińska 2002).

**90. *E. schlettereri* (Kohl, 1888)**

Known only from a single locality in the Małopolska Upland (Kowalczyk 1988).

RL: Maintained category DD (Skibińska 2002).

**91. *E. sexcinctus* (Fabricius, 1775)**

New records from the Baltic Coast (Kowalczyk & Twerd 2011, Olszewski & Kowalczyk 2019), Małopolska Upland (Kowalczyk & Kurzac 2005, Kowalczyk & Szczepko 2008a) and Mazovian Lowland (Kowalczyk & Kurzac 2007b).

**92. *E. spinipes* (A. Morawitz, 1866)**

Recently, the species was recorded from the Baltic Coast, Sandomierz Basin (Olszewski et al. 2013d) and Małopolska Upland (Celary & Plewa 2014, Olszewski et al. 2013d).

RL: Maintained category NT (Skibińska 2002).

**Genus *Entomognathus* Dahlbom, 1844**

**93. *E. brevis* (Vander Linden, 1829)**

Since 2004 known from the Baltic Coast (Kowalczyk & Twerd 2011, Olszewski & Kowalczyk 2019), Małopolska Upland (Kowalczyk & Nadolski 2007), Masurian Lakeland (P. Olszewski, unpublished data), Mazovian Lowland (Kowalczyk & Kurzac 2007b), Podlasie (Wiśniowski & Piotrowski 2013), Pomeranian Lakeland (Olszewski & Kurzac 2019) and Wielkopolska-Kujawy Lowland (Twerd et al. 2017).

**Genus *Gorytes* Latreille, 1804**

**94. *G. albidulus* (Lepelletier de Saint-Fargeau, 1832)**

New records from the Mazovian Lowland (Szczepko 2013, Wiśniowski & Szczepko 2013), Podlasie (Wiśniowski & Piotrowski 2013) and Wielkopolska-Kujawy Lowland (P. Olszewski, unpublished data).

RL: New status to EN.

**95. *G. fallax* Handlirsch, 1888**

Recently, the species was recorded from the Baltic Coast (Olszewski & Kowalczyk 2019), Małopolska Upland (Kowalczyk & Kurzac 2005, Kowalczyk & Nadolski 2007, Kowalczyk & Szczepko 2008a, Kowalczyk & Szczepko 2008b, Soszyński et al. 2008), Mazovian Lowland (Kowalczyk & Kurzac 2007b, Kowalczyk & Kurzac 2009, Szczepko 2013, Wiśniowski & Szczepko 2013) and Wielkopolska-Kujawy Lowland (P. Olszewski, unpublished data).

RL: Current category of threat LC, previously NT (Skibińska 2002).

**96. *G. laticinctus* (Lepelletier de Saint-Fargeau, 1832)**

Since 2004 recorded from the Baltic Coast (Kowalczyk & Twerd 2011, Olszewski & Kowalczyk 2019), Małopolska Upland (Kowalczyk & Kurzac 2005, Kowalczyk & Szczepko 2008a), Masurian Lakeland, Pomeranian Lakeland, Wielkopolska-Kujawy Lowland (P. Olszewski, unpublished data), Mazovian Lowland (Kowalczyk & Kurzac 2007b, Kowalczyk & Kurzac 2009) and Podlasie (Wiśniowski & Piotrowski 2013).

**97. *G. quadrifasciatus* (Fabricius, 1804)**

New records from the Baltic Coast (Olszewski & Kowalczyk 2019), Małopolska Upland (Kowalczyk & Szczepko 2008a), Mazovian Lowland (Kowalczyk & Kurzac 2007b).

czyk & Kurzac 2009, Kowalczyk & Kurzac 2007b, Szczepko 2013, Wiśniowski & Szczepko 2013), Pomeranian Lakeland (Olszewski & Kowalczyk 2019) and Wielkopolska-Kujawy Lowland (Kowalczyk et al. 2009a).

**98. *G. quinquecinctus* (Fabricius, 1793)**

Recently, the species was recorded from the Baltic Coast (Olszewski & Kowalczyk 2019), Małopolska Upland (Kowalczyk & Kurzac 2005, Kowalczyk & Nadolski 2007, Kowalczyk & Szczepko 2008a, Kowalczyk & Szczepko 2008b), Masurian Lakeland (P. Olszewski, unpublished data), Mazovian Lowland (Kowalczyk & Kurzac 2007b, Kowalczyk & Kurzac 2009, Wiśniowski & Szczepko 2013, Szczepko 2013), Podlasie (Wiśniowski & Piotrowski 2013), Pomeranian Lakeland (Ciechanowski et al. 2004, Olszewski & Kowalczyk 2019) and Wielkopolska-Kujawy Lowland (Kowalczyk et al. 2009a, Pawlikowski & Olszewski 2019).

**99. *G. quinquefasciatus* (Panzer, 1798)**

Since 2004 recorded from the Mazovian Lowland (Kowalczyk & Kurzac 2007b, Kowalczyk & Kurzac 2009, Szczepko 2013, Wiśniowski & Szczepko 2013), Małopolska Upland (Kowalczyk & Szczepko 2008b), Masurian Lakeland (P. Olszewski, unpublished data), Pomeranian Lakeland (Olszewski & Kowalczyk 2019) and Wielkopolska-Kujawy Lowland (Kowalczyk et al. 2009a, Pawlikowski & Olszewski 2019, Twerd et al. 2017, Wendzonka 2012).

**Genus *Harpactus* Shuckard, 1837**

**100. *H. elegans* Lepeletier de Saint-Fargeau, 1832**

New records from the Mazovian Lowland (Szczepko 2013, Wiśniowski & Szczepko 2013) and Wielkopolska-Kujawy Lowland (Pawlikowski & Olszewski 2019).

RL: Current category of threat LC, previously NT (Skibińska 2002).

**101. *H. exiguus* (Handlirsch, 1888)**

Only records from the Silesian Upland and Western Beskid Mts (Noskiewicz & Puławski 1960).

RL: Current category of threat CR, previously DD (Skibińska 2002).

**? *Harpactus formosus* (Jurine, 1807)**

Remarks: The record from Poland Plewka (1981) and old records (Noskiewicz & Puławski 1960) are most likely misidentification of *H. pulchellus* (see remarks for *H. pulchellus*). The status of the species needs further verification.

RL: Maintained category NT (Skibińska 2002).

**102. *H. laevis* (Latreille, 1792)**

Recently, the species was recorded the Masurian Lakeland (Olszewski 2014) and Wielkopolska-Kujawy Lowland (Olszewski et al. 2013d, Twerd et al. 2017).

RL: Current category of threat NT, previously VU (Skibińska 2002).

**103. *H. lumatus* (Dahlbom, 1832)**

Since 2004 recorded from the Baltic Coast (Kowalczyk & Twerd 2011, Olszewski & Kowalczyk 2019), Małopolska Upland (Kowalczyk & Kurzac 2005, Kowalczyk & Szczepko 2008a, Kowalczyk & Szczepko 2008b), Mazovian Lowland (Kowalczyk & Kurzac 2007b, Szczepko 2013, Wiśniowski & Szczepko 2013) and Wielkopolska-Kujawy Lowland (Pawlikowski & Olszewski 2019, Twerd et al. 2017, Wendzonka & Żurawlew 2020).

**104. *H. pulchellus* A. Costa, 1859**

= *Harpactus morawitzi* Radoszkowski, 1884

New records from the Wielkopolska-Kujawy Lowland (Olszewski et al. 2017, Pawlikowski & Olszewski 2019) and Lower Silesia: Strupina (51°23'N, 16°48'E), 1 ♀ – 26 VII 2008, leg. M. L. Borowiec.

Remarks: Mokrousov & Popov (2016: 569) regarded *H. morawitzi* as a junior synonym of *H. pulchellus*. They did not discuss the synonymy in detail but their proposal for falling of *morawitzi* with synonymy under *pulchellus* is correct. The third author (TL) had studied the type of *H. pulchellus* in the collection of Achille Costa in the Università degli Studi di Napoli Federico II, Museo Zoologico in Napoli (Italy) as well as the type of *Harpactus morawitzi* in the Zoologisches Museum an der Humboldt-Universität in Berlin and confirmed that they are conspecific. *H. pulchellus* described by a single male from Italy (Campania: San Felice a Cancellò) has first and second metasomal terga red and by this reason had been treated as a different (and unique in term of colour pattern) species by all subsequent authors. It is well known that many species of *Harpactus* exhibit colour-marking polymorphism and *H. pulchellus* is one of the most highly polymorphic in colour and markings even within a single population. For this reason it has been recognized through the years in Europe as different species such as *formosus*, *morawitzi*, *moravicus*. The recognition of the species from its closest relative, *laevis*, is based upon a lack of micropunctuation on the apical half of the second metasomal tergum both in females (Fig. 1) and males (Fig. 2) and in shorter basal flagellar segments in females and shorter apical flagellar segments in males.

RL: Maintained category NT (Skibińska 2002).

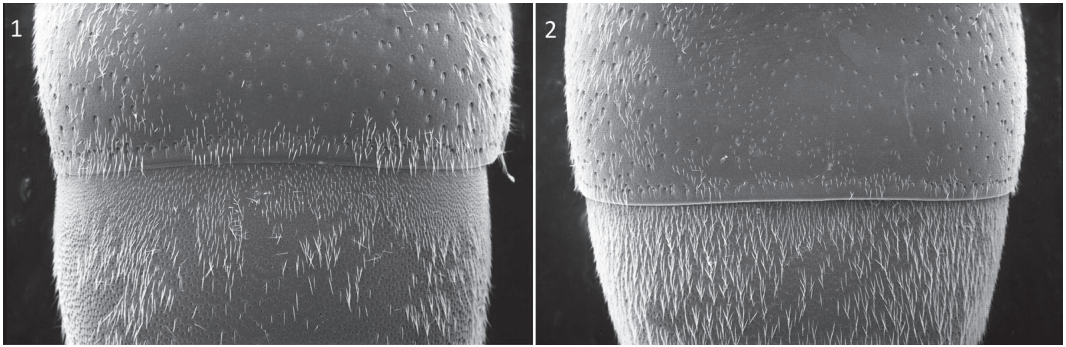


Fig. 1 and 2. *Harpactus pulchellus*, apical part of second metasomal tergum in female (1) and in male (2).

**105. *H. tumidus* (Panzer, 1801)**

Recently, the species was recorded from the Baltic Coast, Pomeranian Lakeland (Olszewski & Kowalczyk 2019), Małopolska Upland (Kowalczyk & Kurzac 2005, Kowalczyk & Nadolski 2007, Kowalczyk & Szczepko 2008a, Kowalczyk & Szczepko 2008b), Mazovian Lowland (Kowalczyk & Kurzac 2007b), Podlasie (L. Twerd, unpublished data) and Wielkopolska-Kujawy Lowland (Kowalczyk et al. 2009a).

RL: Current category of threat LC, previously NT (Skibińska 2002).

**Genus *Hoplisoides* Gribodo, 1884**

**106. *H. punctuosus* (Eversmann, 1849)**

Only records from the Lublin Upland, Małopolska Upland, Mazovian Upland, Pomeranian Lakeland, and Wielkopolska-Kujawy Lowland (Noskiewicz & Puławski 1960).

RL: Current category of threat CR, previously VU (Skibińska 2002).

**Genus *Larra* Fabricius, 1793**

**107. *L. anathema* (Rossi, 1790)**

The occurrence in Poland was confirmed in the Roztocze (Majdan Kasztelański) (Żyła 2019).

RL: Category of threat DD (not listed in Skibińska 2002).

**Genus *Lestica* Billberg, 1820**

**108. *L. alata* (Panzer, 1797)**

New records from the Baltic Coast, Pomeranian Lakeland (Olszewski & Kowalczyk 2019), Małopolska Upland (Kowalczyk et al. 2008, Kowalczyk et al. 2009b, Kowalczyk & Nadolski 2007, Kowalczyk & Szczepko 2008a, Kowalczyk & Szczepko 2008b, Szczepko & Wiśniowski 2009), Masurian Lakeland (Olszewski 2014), Mazovian Lowland

(Kowalczyk & Kurzac 2007b, Kowalczyk & Kurzac 2009, Szczepko 2013, Wiśniowski & Szczepko 2013), Podlasie (Wiśniowski & Piotrowski 2013) and Wielkopolska-Kujawy Lowland (Kowalczyk et al. 2009a, Kowalczyk & Kurzac 2005, Twerd et al. 2017, Wendzonka 2012).

RL: Current category of threat LC, previously VU (Skibińska 2002).

**109. *L. clypeata* (Schreber, 1759)**

Since 2004 known from the Małopolska Upland (Kowalczyk et al. 2008, Kowalczyk & Kurzac 2005, Kowalczyk & Szczepko 2008a, Kowalczyk & Szczepko 2008b, Szczepko & Wiśniowski 2009), Mazovian Lowland (Kowalczyk & Kurzac 2007b, Kowalczyk & Kurzac 2009, Szczepko 2013, Wiśniowski & Szczepko 2013), Podlasie (Wiśniowski & Piotrowski 2013), Pomeranian Lakeland (P. Olszewski, unpublished data) and Wielkopolska-Kujawy Lowland (Kowalczyk et al. 2009a, Pawlikowski & Olszewski 2019).

**110. *L. subterranea* (Fabricius, 1775)**

Recently, the species was recorded from the Baltic Coast (Kowalczyk 2006, Olszewski & Kowalczyk 2019), Małopolska Upland (Kowalczyk et al. 2008, Szczepko & Wiśniowski 2009), Masurian Lakeland (P. Olszewski, unpublished data), Pomeranian Lakeland (Olszewski & Kowalczyk 2019) and Wielkopolska-Kujawy Lowland (Pawlikowski & Olszewski 2019).

RL: Category of threat NT (not listed in Skibińska 2002).

**Genus *Lestiphorus***

**Lepelletier de Saint-Fargeau, 1832**

**111. *L. bicinctus* (Rossi, 1794)**

New records from the Małopolska Upland (Kowalczyk & Szczepko 2008b) and Mazovian Lowland (Kowalczyk & Kurzac 2007b).

### Genus *Lindenius*

#### Lepeletier de Saint-Fargeau & Brullé, 1834

##### 112. *L. albilabris* (Fabricius, 1793)

New records from the Baltic Coast (Kowalczyk & Twerd 2011, Olszewski & Kowalczyk 2019), Małopolska Upland (Kowalczyk et al. 2008, Kowalczyk & Kurzac 2005, Kowalczyk & Nadolski 2007, Kowalczyk & Szczepko 2008a, Kowalczyk & Szczepko 2008b), Masurian Lakeland (P. Olszewski, unpublished data), Mazovian Lowland (Kowalczyk & Kurzac 2007b, Kowalczyk & Kurzac 2009, Szczepko 2013, Wiśniowski & Szczepko 2013), Podlasie (Wiśniowski & Piotrowski 2013), Pomeranian Lakeland (Ciechanowski et al. 2004, Olszewski & Kowalczyk 2019) and Wielkopolska-Kujawy Lowland (Kowalczyk et al. 2009a, Pawlikowski & Olszewski 2019, Twerd et al. 2017, Wendzonka 2011).

##### 113. *L. panzeri* (Vander Linden, 1829)

Recently, the species was recorded from the Baltic Coast (Kowalczyk & Twerd 2011, Olszewski & Kowalczyk 2019), Małopolska Upland (Kowalczyk et al. 2008, Kowalczyk & Kurzac 2005, Kowalczyk & Szczepko 2008a, Szczepko & Wiśniowski 2009), Mazovian Lowland (Kowalczyk & Kurzac 2007b, Kowalczyk & Kurzac 2009, Szczepko 2013, Wiśniowski & Szczepko 2013), Podlasie (Wiśniowski & Piotrowski 2013), Pomeranian Lakeland (Olszewski & Kowalczyk 2019) and Wielkopolska-Kujawy Lowland (Pawlikowski & Olszewski 2019, Twerd et al. 2017, Wendzonka 2012).

##### 114. *L. parkanensis* Zavadil, 1948

Reported in Poland from the first time from the Wielkopolsko-Kujawska Lowland (Olszewski et al. 2017).

RL: Category of threat DD (not listed in Skibińska 2002).

##### 115. *L. pygmaeus* (Rossi, 1794)

New records from the Baltic Coast (Kowalczyk & Twerd 2011, Olszewski & Kowalczyk 2019), Małopolska Upland (Kowalczyk & Szczepko 2008b, Szczepko & Wiśniowski 2009), Masurian Lakeland and Pomeranian Lakeland (P. Olszewski, unpublished data), Mazovian Lowland (Kowalczyk & Kurzac 2007b, Kowalczyk & Kurzac 2009, Szczepko 2013, Wiśniowski & Szczepko 2013) and Wielkopolska-Kujawy Lowland (Pawlikowski & Olszewski 2019, Twerd et al. 2017).

#### Genus *Mellinus* Fabricius, 1790

##### 116. *M. arvensis* (Linnaeus, 1758)

Since 2004 known from the Baltic Coast (Olszewski & Kowalczyk 2019), Białowieża Primeval Forest (Celary & Plewa 2014), Małopolska Upland (Celary

& Plewa 2014, Kowalczyk et al. 2008, Kowalczyk & Kurzac 2005, Kowalczyk & Nadolski 2007, Kowalczyk & Szczepko 2008a, Kowalczyk & Szczepko 2008b, Szczepko & Wiśniowski 2009, 2010), Masurian Lakeland (P. Olszewski, unpublished data), Mazovian Lowland (Kowalczyk & Kurzac 2007b, Kowalczyk & Kurzac 2009, Szczepko 2013, Wiśniowski & Szczepko 2013), Podlasie (Celary & Plewa 2014, Wiśniowski & Piotrowski 2013), Pomeranian Lakeland (Kowalczyk 2004, Olszewski & Kowalczyk 2019) and Wielkopolska-Kujawy Lowland (Celary & Plewa 2014, Kowalczyk et al. 2009a, Pawlikowski & Olszewski 2019).

##### 117. *M. crabroneus* (Thunberg, 1791)

Recently, the species was recorded from the Baltic Coast, Pomeranian Lakeland (Olszewski & Kowalczyk 2019), Małopolska Upland (Kowalczyk & Nadolski 2007, Kowalczyk & Szczepko 2008a, Kowalczyk & Szczepko 2008b), Mazovian Lowland (Kowalczyk & Kurzac 2007b) and Wielkopolska-Kujawy Lowland (Kowalczyk et al. 2009a, Twerd et al. 2017).

#### Genus *Mimesa* Shuckard, 1837

##### 118. *M. bicolor* (Jurine, 1807)

New records from the Baltic Coast, Pomeranian Lakeland (Olszewski & Kowalczyk 2019), Małopolska Upland (Kowalczyk et al. 2008, Kowalczyk & Nadolski 2007, Kowalczyk & Szczepko 2008a, Szczepko & Wiśniowski 2009), Mazovian Lowland (Kowalczyk & Kurzac 2007b), Podlasie (Wiśniowski & Piotrowski 2013) and Wielkopolska-Kujawy Lowland (Kowalczyk et al. 2009a, Twerd et al. 2017).

##### 119. *M. bruxellensis* Bondroit, 1934

Recently, the species was recorded from the Baltic Coast (Kowalczyk & Twerd 2011, Olszewski & Kowalczyk 2019), Masurian Lakeland (P. Olszewski, unpublished data), Mazovian Lowland (Kowalczyk & Kurzac 2007b) and Pomeranian Lakeland (Olszewski & Kowalczyk 2019).

##### 120. *M. crassipes* A. Costa, 1871

Records only from the Lower Silesia and vicinity of Sandomierz (Noskiewicz & Puławski 1960).

RL: Current category of threat CR, previously NT (Skibińska 2002).

##### 121. *M. equestris* (Fabricius, 1804)

Recently, the species was recorded from the Baltic Coast (Olszewski & Kowalczyk 2019), Małopolska Upland (Kowalczyk et al. 2008, Szczepko & Wiśniowski 2009), Masurian Lakeland (P. Olszewski, unpublished data), Mazovian Lowland (Kowalczyk & Kurzac 2007b, Szczepko 2013, Wiśniowski & Szczepko 2013) and Wielkopolska-Kujawy Lowland (Pawlikowski & Olszewski 2019).

**122. *M. lutaria* (Fabricius, 1787)**

Since 2004 known from the Baltic Coast, Pomeranian Lakeland (Olszewski & Kowalczyk 2019), Małopolska Upland (Kowalczyk & Szczepko 2008a) and Mazovian Lowland (Kowalczyk & Kurzac 2007b, Szczepko 2013, Wiśniowski & Szczepko 2013).

**123. *M. vindobonensis* Maidl, 1914**

Known in Poland from a single locality from the Upper Silesia (Wiśniowski & Kowalczyk 1998).

RL: Maintained category DD (Skibińska 2002).

**Genus *Mimumesa* Malloch, 1933**

**124. *M. atratina* (F. Morawitz, 1891)**

Recently, the species was recorded from the Baltic Coast (Kowalczyk & Twerd 2011, Olszewski & Kowalczyk 2019), Małopolska Upland (Kowalczyk & Kurzac 2005, Kowalczyk & Nadolski 2007, Kowalczyk & Szczepko 2008a), Mazovian Lowland (Kowalczyk & Kurzac 2007b) and Wielkopolska-Kujawy Lowland (Pawlikowski & Olszewski 2019).

**125. *M. beaumonti* (van Lith, 1949)**

Since 2004 known from the Baltic Coast (Olszewski & Kowalczyk 2019) and Mazovian Lowland (Kowalczyk & Kurzac 2009).

RL: Maintained category NT (Skibińska 2002).

**126. *M. dahlbomi* (Wesmael, 1852)**

New records from the Baltic Coast, Pomeranian Lakeland (Olszewski & Kowalczyk 2019), Małopolska Upland (Kowalczyk et al. 2008, Kowalczyk & Kurzac 2005, Kowalczyk & Nadolski 2007, Kowalczyk & Szczepko 2008b, Szczepko & Wiśniowski 2009), Mazovian Lowland (Kowalczyk & Kurzac 2007b) and Wielkopolska-Kujawy Lowland (Kowalczyk et al. 2009a).

**127. *M. littoralis* (Bondroit, 1934)**

Recently, the species was recorded only from the Masurian Lakeland (Olszewski 2014).

RL: Maintained category EN (Skibińska 2002).

**128. *M. spooneri* (Richards, 1948)**

Only records from the Baltic Coast, Międzyzdroje (Blüthgen 1954).

RL: Current category of threat CR, previously NT (Skibińska 2002).

**129. *M. unicolor* (Vander Linden, 1829)**

New records from the Baltic Coast (Kowalczyk & Twerd 2011, Olszewski & Kowalczyk 2019), Małopolska Upland (Kowalczyk & Szczepko 2008a, Kowalczyk & Szczepko 2008b), Mazovian Lowland (Kowalczyk & Kurzac 2007b, Szczepko 2013, Wiśniowski & Szczepko 2013) and Pomeranian Lakeland (Olszewski & Kowalczyk 2019).

**Genus *Miscophus* Jurine, 1807**

For comments on the Polish species of *Miscophus* see Olszewski et al. (2014).

**130. *M. ater* Lepeletier de Saint-Fargeau, 1845**

New records from the Baltic Coast (Olszewski & Kowalczyk 2019), Małopolska Upland (Kowalczyk et al. 2008, Kowalczyk & Kurzac 2005, Kowalczyk & Szczepko 2008a, Kowalczyk & Szczepko 2008b, Olszewski et al. 2014, Szczepko & Wiśniowski 2009), Masurian Lakeland (Olszewski 2014, Olszewski et al. 2014), Mazovian Lowland (Kowalczyk & Kurzac 2007b, Kowalczyk & Kurzac 2009, Olszewski et al. 2014, Szczepko 2013, Wiśniowski & Szczepko 2013), Pomeranian Lakeland (Olszewski et al. 2014), Roztocze, Sandomierz Basin, Upper Silesia (Olszewski et al. 2014) and Wielkopolska-Kujawy Lowland (Kowalczyk et al. 2009a, Olszewski et al. 2014, Pawlikowski & Olszewski 2019).

RL: Maintained category DD (Skibińska 2002).

**131. *M. bicolor* Jurine, 1807**

Recently, the species was recorded from the Masurian Lakeland, Sandomierz Basin, Upper Silesia (Olszewski et al. 2014) and Wielkopolska-Kujawy Lowland (Olszewski et al. 2014, Kowalczyk et al. 2009a, Pawlikowski & Olszewski 2019).

**132. *M. concolor* Dahlbom, 1845**

New records from the Baltic Coast (Olszewski & Kowalczyk 2019), Małopolska Upland (Kowalczyk & Kurzac 2005, Olszewski et al. 2014, Szczepko & Wiśniowski 2009), Mazovian Lowland (Olszewski et al. 2014, Szczepko 2013, Wiśniowski & Szczepko 2013), Podlasie, Pomeranian Lakeland (Olszewski et al. 2014) and Wielkopolska-Kujawy Lowland (Olszewski et al. 2014, Pawlikowski & Olszewski 2019).

RL: Category of threat LC (not listed in Skibińska 2002).

**133. *M. niger* Dahlbom, 1844**

New records from the Masurian Lakeland (Olszewski 2014, Olszewski et al. 2014) and Wielkopolska-Kujawy Lowland (Olszewski et al. 2014, Pawlikowski & Olszewski 2019).

RL: Maintained category LC (Skibińska 2002).

**134. *M. postumus* Bischoff, 1921**

Since 2004 known from the Małopolska Upland (Kowalczyk et al. 2008, Szczepko & Wiśniowski 2009), Upper Silesia (Olszewski et al. 2014) and Wielkopolska-Kujawy Lowland (Olszewski et al. 2014, Pawlikowski & Olszewski 2019).

RL: Maintained category VU (Skibińska 2002).

**135. *M. spurius* (Dahlbom, 1832)**

Recently, the species was recorded from the Masurian Lakeland (Olszewski 2014, Olszewski et al. 2014), Upper Silesia (Olszewski et al. 2014) and Wielkopolska-Kujawy Lowland (Olszewski et al. 2014, Pawlikowski & Olszewski 2019).

RL: Maintained category LC (Skibińska 2002).

**Genus *Nitela* Latreille, 1809**

**136. *N. borealis* Valkeila, 1974**

Recently, the species was recorded from the Mazovian Lowland (Szczepko 2013, Wiśniowski & Szczepko 2013) and Podlasie (Wiśniowski & Piotrowski 2013).

RL: Current category of threat LC, previously NT (Skibińska 2002).

**137. *N. fallax* Kohl, 1884**

Not recorded after Wiśniowski (2004).

RL: Category of threat DD (not listed in Skibińska 2002).

**138. *N. spinolae* Latreille, 1809**

Since 2004 known from the Baltic Coast (Olszewski & Kowalczyk 2019), Małopolska Upland (Kowalczyk et al. 2008, Kowalczyk & Kurzac 2005, Kowalczyk & Nadolski 2007, Szczepko & Wiśniowski 2009) and Mazovian Lowland (Kowalczyk & Kurzac 2007b, Szczepko 2013, Wiśniowski & Szczepko 2013).

RL: Category of threat DD (not listed in Skibińska 2002).

**Genus *Nysson* Latreille, 1802**

**139. *N. dimidiatus* Jurine, 1807**

Since 2004 recorded from the Baltic Coast (Kowalczyk & Twerd 2011, Olszewski & Kowalczyk 2019), Małopolska Upland (Kowalczyk et al. 2011, Kowalczyk & Szczepko 2008b), Masurian Lakeland (Olszewski et al. 2013a), Mazovian Lowland (Szczepko 2013, Wiśniowski & Szczepko 2013) and Wielkopolska-Kujawy Lowland (Olszewski et al. 2013a, Twerd et al. 2017).

**140. *N. distinguendus* Chevrier, 1867**

Reported in Poland for the first time from the Wielkopolska-Kujawy Lowland (Olszewski et al. 2013a).

**141. *N. hrubanti* Balthasar, 1972**

Recently recorded from Poland in Wielkopolska-Kujawy Lowland (Wendzonka & Żurawlew 2020).

**142. *N. interruptus* (Fabricius, 1798)**

New recorded from the Małopolska Upland (Kowalczyk & Nadolski 2007), Mazovian Lowland (Szczepko 2013, Wiśniowski & Szczepko 2013) and Wielkopolska-Kujawy Lowland (Twerd et al. 2017).

**143. *N. maculosus* (Gmelin, 1790)**

New records from the Baltic Coast (Kowalczyk & Twerd 2011, Olszewski & Kowalczyk 2019), Małopolska Upland (Kowalczyk et al. 2011, Kowalczyk & Kurzac 2005, Kowalczyk & Nadolski 2007, Kowalczyk & Szczepko 2008b), Masurian Lakeland, Pomeranian Lakeland (P. Olszewski, unpublished data), Mazovian Lowland (Kowalczyk & Kurzac 2007b, Kowalczyk & Kurzac 2009, Szczepko 2013, Wiśniowski & Szczepko 2013), Podlasie (Wiśniowski & Piotrowski 2013) and Wielkopolska-Kujawy Lowland (Kowalczyk et al. 2009a, Pawlikowski & Olszewski 2019, Twerd et al. 2017).

**144. *N. niger* Chevrier, 1868**

New records from the Baltic Coast (Olszewski & Kowalczyk 2019), Masurian Lakeland (P. Olszewski, unpublished data), Mazovian Lowland (Kowalczyk & Kurzac 2007a, Kowalczyk & Kurzac 2007b, Kowalczyk & Kurzac 2009, Szczepko 2013, Wiśniowski & Szczepko 2013), Podlasie (Wiśniowski & Piotrowski 2013) and Wielkopolska-Kujawy Lowland (Twerd et al. 2017).

RL: Current category of threat LC, previously NT (Skibińska 2002).

**145. *N. spinosus* (J. Förster, 1771)**

Since 2004 recorded from the Baltic Coast (Kowalczyk & Twerd 2011, Olszewski & Kowalczyk 2019), Małopolska Upland (Kowalczyk et al. 2008, Kowalczyk & Szczepko 2008a, Szczepko & Wiśniowski 2009) and Mazovian Lowland (Kowalczyk & Kurzac 2007b, Szczepko 2013, Wiśniowski & Szczepko 2013).

**146. *N. tridens* Gerstaecker, 1867**

New records from the Małopolska Upland (Kowalczyk & Kurzac 2005, Kowalczyk & Nadolski 2007, Kowalczyk & Szczepko 2008b), Mazovian Lowland (Kowalczyk & Kurzac 2007b), Pomeranian Lakeland (Olszewski & Kowalczyk 2019) and Wielkopolska-Kujawy Lowland (Twerd et al. 2017).

**147. *N. trimaculatus* (Rossi, 1790)**

Since 2004 recorded from the Baltic Coast (Olszewski & Kowalczyk 2019), Małopolska Upland (Kowalczyk & Kurzac 2005, Kowalczyk & Nadolski 2007, Kowalczyk & Szczepko 2008b), Masurian Lakeland, Pomeranian Lakeland (P. Olszewski, unpublished data), Mazovian Lowland (Kowalczyk & Kurzac 2007b, Kowalczyk & Kurzac 2009, Szczepko 2013, Wiśniowski & Szczepko 2013) and Wielkopolska-Kujawy Lowland (Twerd et al. 2017).

**148. *N. variabilis* Chevrier, 1867**

Records only from the Małopolska Upland (Noskiewicz & Puławski 1960).

RL: Maintained category DD (Skibińska 2002).

Genus *Oxybelus* Latreille, 1796

149. *O. argentatus* Curtis, 1833

New records from the Małopolska Upland (Kowalczyk et al. 2008, Kowalczyk et al. 2011, Kowalczyk & Kurzac 2005, Kowalczyk & Nadolski 2007, Kowalczyk & Szczepko 2008a, Szczepko & Wiśniowski 2009), Mazovian Lowland (Kowalczyk & Kurzac 2007b, Kowalczyk & Kurzac 2009), Podlasie (Wiśniowski & Piotrowski 2013), Pomeranian Lakeland and Wielkopolska-Kujawy Lowland (Pawlikowski & Olszewski 2019).

RL: Current category of threat LC, previously VU (Skibińska 2002).

150. *O. bipunctatus* Olivier, 1812

Recently, the species was recorded from the Baltic Coast (Kowalczyk & Twerd 2011, Olszewski & Kowalczyk 2019), Małopolska Upland (Kowalczyk et al. 2008, Kowalczyk & Kurzac 2005, Kowalczyk & Nadolski 2007, Kowalczyk & Szczepko 2008a, Szczepko & Wiśniowski 2009), Masurian Lakeland (P. Olszewski, unpublished data), Mazovian Lowland (Kowalczyk & Kurzac 2007b, Kowalczyk & Kurzac 2009, Szczepko 2013, Wiśniowski & Szczepko 2013), Podlasie (Wiśniowski & Piotrowski 2013) and Wielkopolska-Kujawy Lowland (Pawlikowski & Olszewski 2019, Twerd et al. 2017, Wendzonka 2011).

151. *O. dissectus* Dahlbom, 1845

Since 2004 known from the Wielkopolska-Kujawy Lowland (Olszewski et al. 2017).

RL: Category of threat EN (not listed in Skibińska 2002).

152. *O. haemorrhoidalis* Olivier, 1812

New records from the Lower Silesia, Lublin Upland, Sandomierz Basin (B. Wiśniowski, unpublished data), Małopolska Upland (Kowalczyk et al. 2009b), Mazovian Lowland (Szczepko 2013, Wiśniowski & Szczepko 2013), Pomeranian Lakeland (P. Olszewski, unpublished data) and Wielkopolska-Kujawy Lowland (Pawlikowski & Olszewski 2019, Wendzonka 2012).

153. *O. latro* Olivier, 1812

New records only from the Upper Silesia (B. Wiśniowski, unpublished data).

RL: Current category of threat VU, previously EN (Skibińska 2002).

154. *O. lineatus* (Fabricius, 1787)

Recently, the species was recorded from the Wielkopolska-Kujawy Lowland (Olszewski et al. 2013d).

RL: Maintained category EN (Skibińska 2002).

155. *O. mandibularis* Dahlbom, 1845

Since 2004 known from the Baltic Coast (Olszewski & Kowalczyk 2019), Małopolska Upland (Kowalczyk et al. 2008, Kowalczyk & Szczepko 2008a, Szczepko & Wiśniowski 2009), Mazovian Lowland (Kowalczyk & Kurzac 2007b, Szczepko 2013, Wiśniowski & Szczepko 2013), Pomeranian Lakeland (P. Olszewski, unpublished data), Upper Sielsia (V. Antonova, unpublished data) and Wielkopolska-Kujawy Lowland (Twerd et al. 2017).

156. *O. quatuordecimnotatus* Jurine, 1807

Recently, the species was recorded from the Baltic Coast (Kowalczyk & Twerd 2011, Olszewski & Kowalczyk 2019), Małopolska Upland (Kowalczyk et al. 2008, Kowalczyk & Kurzac 2005, Kowalczyk & Szczepko 2008a, Kowalczyk & Szczepko 2008b, Szczepko & Wiśniowski 2009), Masurian Lakeland (P. Olszewski, unpublished data), Mazovian Lowland (Kowalczyk & Kurzac 2007b, Kowalczyk & Kurzac 2009, Szczepko 2013, Wiśniowski & Szczepko 2013) and Wielkopolska-Kujawy Lowland (Kowalczyk et al. 2009a, Twerd et al. 2017, Wendzonka 2011).

157. *O. subspinosus* Klug, 1835

Recently, the species was recorded from the Lublin Upland, Polesie National Park (B. Wiśniowski, unpublished data) and Wielkopolska-Kujawy Lowland (Wendzonka 2011).

Remarks: Guichard (1993: 534) and Dollfuss (2008: 494) regarded *O. latidens* as a junior synonym of *O. subspinosus*.

RL: Current category of threat EN, previously NT (Skibińska 2002).

158. *O. trispinosus* (Fabricius, 1787)

Since 2004 known from the Baltic Coast (Ciechanowski et al. 2008, Kowalczyk & Twerd 2011, Olszewski & Kowalczyk 2019), Małopolska Upland (Kowalczyk et al. 2008, Kowalczyk & Kurzac 2005, Kowalczyk & Szczepko 2008a, Kowalczyk & Szczepko 2008b, Szczepko & Wiśniowski 2009), Mazovian Lowland (Kowalczyk & Kurzac 2007b, Szczepko 2013, Wiśniowski & Szczepko 2013), Podlasie (Wiśniowski & Piotrowski 2013) and Wielkopolska-Kujawy Lowland (Kowalczyk et al. 2009a, Pawlikowski & Olszewski 2019, Twerd et al. 2017).

159. *O. uniglumis* (Linnaeus, 1758)

New records from the Baltic Coast (Olszewski & Kowalczyk 2019), Małopolska Upland (Kowalczyk et al. 2008, Kowalczyk & Kurzac 2005, Kowalczyk & Nadolski 2007, Kowalczyk & Szczepko 2008a, Kowalczyk & Szczepko 2008b, Szczepko & Wiśniowski 2009), Masurian Lakeland (P. Olszewski, unpublished data), Mazovian Lowland (Kowalczyk & Kurzac 2007b, Kowalczyk & Kurzac 2009,



Szczepko 2013, Wiśniowski & Szczepko 2013), Pomeranian Lakeland (Ciechanowski et al. 2004) and Wielkopolska-Kujawy Lowland (Kowalczyk et al. 2009a, Pawlikowski & Olszewski 2019, Twerd et al. 2017).

**160. *O. variegatus* Wesmael, 1852**

Recently, the species was recorded from the Baltic Coast (Kowalczyk & Twerd 2011, Olszewski & Kowalczyk 2019), Masurian Lakeland (Olszewski et al. 2021), Mazovian Lowland (Kowalczyk & Kurzac 2007b, Szczepko 2013, Wiśniowski & Szczepko 2013), Podlasie (Wiśniowski & Piotrowski 2013), Pomeranian Lakeland (P. Olszewski, unpublished data) and Wielkopolska-Kujawy Lowland (Pawlikowski & Olszewski 2019, Twerd et al. 2017, Wendzonka 2011).

RL: Current category of threat LC, previously VU (Skibińska 2002).

**Genus *Passaloecus* Shuckard, 1837**

**161. *P. borealis* Dahlbom, 1844**

New records from the Małopolska Upland (Szczepko & Wiśniowski 2009), Mazovian Lowland (Szczepko 2013, Wiśniowski & Szczepko 2013) and Podlasie (Wiśniowski & Piotrowski 2013).

**162. *P. brevilabris* Wolf, 1958**

New records only from the Małopolska Upland (Szczepko & Wiśniowski 2009).

RL: Maintained category DD (Skibińska 2002).

**163. *P. clypealis* Faester, 1947**

Since 2004 known from the Małopolska Upland (Kowalczyk & Nadolski 2007), Mazovian Lowland (Szczepko 2013, Wiśniowski & Szczepko 2013) and Wielkopolska-Kujawy Lowland (Twerd et al. 2017).

RL: Maintained category DD (Skibińska 2002).

**164. *P. corniger* Shuckard, 1837**

Recently, the species was recorded from the Baltic Coast (Olszewski & Kowalczyk 2019), Małopolska Upland (Kowalczyk et al. 2008, Kowalczyk & Kurzac 2005, Kowalczyk & Szczepko 2008a, Szczepko & Wiśniowski 2009), Mazovian Lowland (Kowalczyk & Kurzac 2007b, Szczepko 2013, Wiśniowski & Szczepko 2013), Podlasie (Wiśniowski & Piotrowski 2013) and Pomeranian Lakeland (Kowalczyk 2004, Olszewski & Kowalczyk 2019).

**165. *P. eremita* Kohl, 1893**

New records from the Małopolska Upland (Kowalczyk & Kurzac 2005, Kowalczyk & Szczepko 2008a, Szczepko & Wiśniowski 2009) and Mazovian Lowland (Kowalczyk & Kurzac 2007b).

**166. *P. gracilis* (Curtis, 1834)**

New records from the Baltic Coast, Pomeranian Lakeland (Olszewski & Kowalczyk 2019), Małopolska Upland (Kowalczyk et al. 2008, Kowalczyk & Kurzac 2005, Kowalczyk & Nadolski 2007, Kowalczyk & Szczepko 2008b, Szczepko & Wiśniowski 2009), Mazovian Lowland (Kowalczyk & Kurzac 2007b, Szczepko 2013, Wiśniowski & Szczepko 2013), Podlasie (Wiśniowski & Piotrowski 2013) and Wielkopolska-Kujawy Lowland (Pawlikowski & Olszewski 2019).

**167. *P. insignis* (Vander Linden, 1829)**

Recently, the species was recorded from the Baltic Coast (Ciechanowski et al. 2008, Olszewski & Kowalczyk 2019), Małopolska Upland (Kowalczyk & Kurzac 2005, Szczepko & Wiśniowski 2009), Mazovian Lowland (Kowalczyk & Kurzac 2007b, Szczepko 2013, Wiśniowski & Szczepko 2013), Pomeranian Lakeland (Olszewski & Kowalczyk 2019) and Wielkopolska-Kujawy Lowland (Pawlikowski & Olszewski 2019).

**168. *P. monilicornis* Dahlbom, 1842**

Since 2004 known from the Małopolska Upland (Szczepko & Wiśniowski 2009) and Mazovian Lowland (Kowalczyk & Kurzac 2007b, Szczepko 2013, Wiśniowski & Szczepko 2013).

**169. *P. pictus* Ribaut, 1952**

Reported in Poland for the first time from the Wielkopolska-Kujawy Lowland (Olszewski & Pawlikowski 2013).

**170. *P. singularis* Dahlbom, 1844**

Since 2004 known from the Baltic Coast (Olszewski & Kowalczyk 2019), Małopolska Upland (Kowalczyk et al. 2008, Kowalczyk & Kurzac 2005, Kowalczyk & Nadolski 2007, Kowalczyk & Szczepko 2008a, Kowalczyk & Szczepko 2008b, Szczepko & Wiśniowski 2009), Masurian Lakeland, Pomeranian Lakeland (P. Olszewski, unpublished data), Mazovian Lowland (Kowalczyk & Kurzac 2007b, Szczepko 2013, Wiśniowski & Szczepko 2013) and Wielkopolska-Kujawy Lowland (Twerd et al. 2017).

**171. *P. turionum* Dahlbom, 1844**

New records from the Małopolska Upland (Szczepko & Wiśniowski 2009) and Wielkopolska-Kujawy Lowland (P. Olszewski, unpublished data).

**172. *P. vandeli* Ribaut, 1952**

Since 2004 recorded from the Wielkopolska-Kujawy Lowland (B. Wiśniowski, unpublished data).

## Genus *Pemphredon* Latreille, 1796

For comments on the Polish species of *Pemphredon* see Wiśniowski (2003).

### 173. *P. austriaca* (Kohl, 1888)

Since 2004 known from the Baltic Coast (Kowalczyk 2006, Olszewski & Kowalczyk 2019), Małopolska Upland (Kowalczyk et al. 2008, Szczepko & Wiśniowski 2009) and Wielkopolska-Kujawy Lowland (Twerd et al. 2017).

RL: Maintained category LC (Skibińska 2002).

### 174. *P. baltica* Merisuo, 1972

New records only from the Mazovian Lowland (Szczepko 2013, Wiśniowski & Szczepko 2013).

### 175. *P. clypealis* (Thomson, 1870)

New records only from the Mazovian Lowland (Kowalczyk & Kurzac 2007b).

### 176. *P. enslini* Wagner, 1932

New records only from the Mazovian Lowland (Szczepko 2013, Wiśniowski & Szczepko 2013).

### 177. *P. fabricii* M. Müller, 1911

Until recently, not distinguished from *Pemphredon lethifer* (Shuckard, 1837), now considered a separate species (Jacobs 2007). Recently, the species was recorded from the Mazovian Lowland (Szczepko 2013, Wiśniowski & Szczepko 2013), Podlasie (Wiśniowski & Piotrowski 2013), Pomeranian Lakeland and Wielkopolska-Kujawy Lowland (P. Olszewski, unpublished data).

### 178. *P. flavistigma* Thomson, 1874

Not recorded after Wiśniowski (2004).

RL: Maintained category DD (Skibińska 2002).

### 179. *P. inornata* Say, 1824

New records from the Baltic Coast (Kowalczyk & Twerd 2011, Olszewski & Kowalczyk 2019), Małopolska Upland (Kowalczyk et al. 2008, Kowalczyk & Kurzac 2005, Kowalczyk & Nadolski 2007, Kowalczyk & Szczepko 2008a, Szczepko & Wiśniowski 2009), Masurian Lakeland, Pomeranian Lakeland (P. Olszewski, unpublished data), Mazovian Lowland (Kowalczyk & Kurzac 2007b, Szczepko 2013, Wiśniowski & Szczepko 2013), Podlasie (Wiśniowski & Piotrowski 2013) and Wielkopolska-Kujawy Lowland (Twerd et al. 2017).

### 180. *P. lethifer* (Shuckard, 1837)

New records from the Baltic Coast, Pomeranian Lakeland (Olszewski & Kowalczyk 2019), Małopolska Upland (Kowalczyk et al. 2008, Kowalczyk & Nadolski 2007, Kowalczyk & Szczepko 2008a, Szczepko & Wiśniowski 2009), Mazovian Lowland (Kowalczyk & Kurzac 2007b, Szczepko 2013, Wi-

śniowski & Szczepko 2013), Podlasie (Wiśniowski & Piotrowski 2013) and Wielkopolska-Kujawy Lowland (Pawlikowski & Olszewski 2019, Twerd et al. 2017).

### 181. *P. lugens* Dahlbom, 1842

Recently, the species was recorded from the Małopolska Upland (Kowalczyk et al. 2008, Szczepko & Wiśniowski 2009), Mazovian Lowland (Kowalczyk & Kurzac 2009, Szczepko 2013, Wiśniowski & Szczepko 2013) and Pomeranian Lakeland (Olszewski & Kowalczyk 2019).

### 182. *P. lugubris* (Fabricius, 1793)

Recently, the species was recorded from the Baltic Coast, Pomeranian Lakeland (Olszewski & Kowalczyk 2019), Małopolska Upland (Kowalczyk et al. 2008, Kowalczyk & Kurzac 2005, Kowalczyk & Nadolski 2007, Szczepko & Wiśniowski 2009), Masurian Lakeland, Wielkopolska-Kujawy Lowland (P. Olszewski, unpublished data) and Mazovian Lowland (Kowalczyk & Kurzac 2007b, Szczepko 2013, Wiśniowski & Szczepko 2013).

### 183. *P. montana* Dahlbom, 1844

New records from the Baltic Coast, Pomeranian Lakeland (Olszewski & Kowalczyk 2019), Masurian Lakeland (P. Olszewski, unpublished data), Mazovian Lowland (Szczepko 2013, Wiśniowski & Szczepko 2013) and Wielkopolska-Kujawy Lowland (Kowalczyk et al. 2009a).

### 184. *P. morio* Vander Linden, 1829

New records from the Małopolska Upland (Kowalczyk et al. 2008, Kowalczyk & Kurzac 2005, Kowalczyk & Szczepko 2008b, Szczepko & Wiśniowski 2009), Mazovian Lowland (Kowalczyk & Kurzac 2007b, Szczepko 2013, Wiśniowski & Szczepko 2013), Pomeranian Lakeland (Olszewski & Kowalczyk 2019) and Wielkopolska-Kujawy Lowland (Twerd et al. 2017).

### 185. *P. mortifer* Valkeila, 1972

Not recorded after Wiśniowski (2004).

### 186. *P. podagrica* Chevrier, 1870

Not recorded after Wiśniowski (2004).

### 187. *P. rugifer* (Dahlbom, 1844)

Recently, the species was recorded from the Baltic Coast (Kowalczyk & Twerd 2011, Olszewski & Kowalczyk 2019), Małopolska Upland (Kowalczyk et al. 2008, Kowalczyk et al. 2011, Kowalczyk & Kurzac 2005, Kowalczyk & Nadolski 2007, Kowalczyk & Szczepko 2008b, Szczepko & Wiśniowski 2009), Masurian Lakeland (P. Olszewski, unpublished data) and Mazovian Lowland (Kowalczyk & Kurzac 2007b, Kowalczyk & Kurzac 2009).

**188. *P. wesmaeli* (A. Morawitz, 1864)**

New records from the Wielkopolska-Kujawy Lowland (P. Olszewski, unpublished data).

**Genus *Philanthus* Fabricius, 1790**

**189. *P. triangulum* (Fabricius, 1775)**

New records from the Baltic Coast (Ciechanowski et al. 2008, Kowalczyk & Twerd 2011, Olszewski & Kowalczyk 2019), Małopolska Upland (Kowalczyk et al. 2008, Kowalczyk & Kurzac 2005, Kowalczyk & Nadolski 2007, Kowalczyk & Szczepko 2008a, Kowalczyk & Szczepko 2008b, Szczepko & Wiśniowski 2009, 2010), Masurian Lakeland (P. Olszewski, unpublished data), Mazovian Lowland (Kowalczyk & Kurzac 2007b, Kowalczyk & Kurzac 2009, Szczepko 2013, Wiśniowski & Szczepko 2013), Pomeranian Lakeland (Olszewski & Kowalczyk 2019) and Wielkopolska-Kujawy Lowland (Kowalczyk et al. 2009a, Pawlikowski & Olszewski 2019, Twerd et al. 2017, Wendzonka 2011).

**Genus *Polemistus* de Saussure, 1892**

**190. *P. abnormis* (Kohl, 1888)**

Not recorded after Wiśniowski (2004).

RL: Maintained category DD (Skibińska 2002).

**Genus *Psen* Latreille, 1796**

**191. *P. ater* (Olivier, 1792)**

New records from the Baltic Coast (Ciechanowski et al. 2008, Kowalczyk & Twerd 2011, Olszewski & Kowalczyk 2019), Mazovian Lowland (Kowalczyk & Kurzac 2007b) and Pomeranian Lakeland (Olszewski & Kowalczyk 2019).

**Genus *Psenulus* Kohl, 1897**

**192. *P. chevrieri* (Tournier, 1889)**

Schmid-Egger (2016) provided new diagnostic characters for identification of pallipes species group including *P. chevrieri*.

The species was recorded in Poland for the first time from the Wielkopolska-Kujawy Lowland (Olszewski & Pawlikowski 2013), also known from Kraków-Wieluń Upland, Lower Silesia, Podlasie, Roztocze and Western Beskid Mts (Wiśniowski, unpublished).

**193. *P. concolor* (Dahlbom, 1843)**

Recently, the species was recorded from the Baltic Coast (Kowalczyk & Twerd 2011, Olszewski & Kowalczyk 2019) and Małopolska Upland (Kowalczyk & Szczepko 2008a).

**194. *P. fuscipennis* (Dahlbom, 1843)**

Since 2004 known from the Małopolska Upland (Kowalczyk et al. 2008, Kowalczyk & Szczepko

2008a, Szczepko & Wiśniowski 2009) and Mazovian Lowland (Kowalczyk & Kurzac 2009, Szczepko 2013, Wiśniowski & Szczepko 2013).

**195. *P. laevigatus* (Schenck, 1857)**

New records from the Kraków-Wieluń Upland (Sawoniewicz & Wiśniowski 2007), Małopolska Upland (Kowalczyk & Kurzac 2005, Kowalczyk & Szczepko 2008a), Mazovian Lowland (Kowalczyk & Kurzac 2007b, Szczepko 2013, Wiśniowski & Szczepko 2013), Pomeranian Lakeland (Kowalczyk 2004, Olszewski & Kowalczyk 2019) and Wielkopolska-Kujawy Lowland (P. Olszewski, unpublished data).

**196. *P. meridionalis* de Beaumont, 1937**

Reported in Poland from the first time from the Podlasie, Wielkopolska-Kujawy Lowland (Olszewski et al. 2013b) and Pomeranian Lakeland (P. Olszewski, unpublished data).

**197. *P. pallipes* (Panzer, 1798)**

Recently, the species was recorded from the Baltic Coast (Olszewski & Kowalczyk 2019), Kraków-Wieluń Upland (Sawoniewicz & Wiśniowski 2007), Małopolska Upland (Kowalczyk et al. 2008, Kowalczyk & Kurzac 2005, Kowalczyk & Nadolski 2007, Kowalczyk & Szczepko 2008a, Kowalczyk & Szczepko 2008b, Szczepko & Wiśniowski 2009), Masurian Lakeland, Pomeranian Lakeland (P. Olszewski, unpublished data), Mazovian Lowland (Kowalczyk & Kurzac 2007b, Kowalczyk & Kurzac 2009, Szczepko 2013, Wiśniowski & Szczepko 2013), Podlasie (Wiśniowski & Piotrowski 2013) and Wielkopolska-Kujawy Lowland (Pawlikowski & Olszewski 2019).

**198. *P. schencki* (Tournier, 1889)**

New records from the Małopolska Upland (Kowalczyk & Kurzac 2005, Kowalczyk & Szczepko 2008b), Mazovian Lowland (Kowalczyk & Kurzac 2007b) and Pomeranian Lakeland (P. Olszewski, unpublished data).

**Genus *Rhopalum* Stephens, 1829**

**199. *R. austriacum* (Kohl, 1899)**

Known in Poland from the Kraków-Wieluń Upland (Wiśniowski 1993, 2002) and Roztocze (B. Wiśniowski, unpublished data).

**200. *R. clavipes* (Linnaeus, 1758)**

Since 2004 known from the Baltic Coast, Pomeranian Lakeland (Olszewski & Kowalczyk 2019), Małopolska Upland (Kowalczyk et al. 2008, Kowalczyk & Kurzac 2005, Szczepko & Wiśniowski 2009), Mazovian Lowland (Kowalczyk & Kurzac 2007b, Szczepko 2013, Wiśniowski & Szczepko 2013) and Podlasie (Wiśniowski & Piotrowski 2013).

**201. *R. coarctatum* (Scopoli, 1763)**

New records from the Baltic Coast (Olszewski & Kowalczyk 2019), Małopolska Upland (Kowalczyk et al. 2008, Kowalczyk & Szczepko 2008a, Szczepko & Wiśniowski 2009), Mazovian Lowland (Kowalczyk & Kurzac 2007b), Podlasie (Wiśniowski & Piotrowski 2013) and Pomeranian Lakeland (P. Olszewski, unpublished data).

**202. *R. gracile* Wesmael, 1852**

Recently, the species was recorded from the Małopolska Upland (B. Wiśniowski, unpublished data), Podlasie (Wiśniowski & Piotrowski 2013) and Wielkopolsko-Kujawska Lowland (Wendzonka & Żurawlew 2020).

RL: Maintained category DD (Skibińska 2002).

**Genus *Solierella* Spinola, 1851**

**203. *S. compedita* (Piccioli, 1869)**

New records from the Małopolska Upland (Kowalczyk & Nadolski 2007) and Wielkopolska-Kujawy Lowland (Twerd et al. 2017).

**Genus *Spilomena* Shuckard, 1838**

**204. *S. beata* Blüthgen, 1953**

New records from the Mazovian Lowland (Szczepko 2013, Wiśniowski & Szczepko 2013), Podlasie and Wielkopolska-Kujawy Lowland (B. Wiśniowski, unpublished data).

**205. *S. curruca* (Dahlbom, 1843)**

Not recorded after Wiśniowski (2004).

RL: Category of threat DD (not listed in Skibińska 2002).

**206. *S. differens* Blüthgen, 1953**

Not recorded after Wiśniowski (2004).

RL: Category of threat DD (not listed in Skibińska 2002).

**207. *S. enslini* Blüthgen, 1953**

New records only from the Mazovian Lowland (Szczepko 2013, Wiśniowski & Szczepko 2013).

**208. *S. mocsaryi* Kohl, 1898**

Not recorded after Wiśniowski (2004).

RL: Category of threat DD (not listed in Skibińska 2002).

**209. *S. punctatissima* Blüthgen, 1953**

Not recorded after Wiśniowski (2004).

RL: Current category of threat DD, previously NT (Skibińska 2002).

**210. *S. troglodytes* (Vander Linden, 1829)**

Since 2004 known only from the Mazovian Lowland (Szczepko 2013, Wiśniowski & Szczepko 2013).

**Genus *Stigmus* Panzer, 1804**

**211. *S. pendulus* Panzer, 1804**

Recently, the species was recorded from the Baltic Coast (Olszewski & Kowalczyk 2019), Małopolska Upland (Kowalczyk et al. 2008, Kowalczyk & Kurzac 2005, Szczepko & Wiśniowski 2009) and Mazovian Lowland (Szczepko 2013, Wiśniowski & Szczepko 2013).

**212. *S. solskyi* A. Morawitz, 1864**

New records from the Baltic Coast (Olszewski & Kowalczyk 2019), Małopolska Upland (Kowalczyk et al. 2008, Kowalczyk & Kurzac 2005, Szczepko & Wiśniowski 2009), Mazovian Lowland (Kowalczyk & Kurzac 2007b) and Pomeranian Lakeland (Kowalczyk 2004, Olszewski & Kowalczyk 2019).

**Genus *Stizus* Latreille, 1802**

**213. *S. perrisi* Dufour, 1838**

Since 2004 recorded only from the Wielkopolska-Kujawy Lowland (Olszewski et al. 2013d, Pawlikowski & Olszewski 2019).

RL: Maintained category CR (Skibińska 2002).

**Genus *Tachysphex* Kohl, 1883**

**214. *T. austriacus* Kohl, 1892**

Recently published as a new species for Poland (Olszewski et al. 2013c). Recorded from a few localities: Małopolska Upland, Mazovian Lowland (Straka 2016), Masurian Lakeland (Olszewski et al. 2013c, Straka 2016), Pomeranian Lakeland (P. Olszewski, unpublished data), Upper Silesia, Sandomierz Basin (Olszewski et al. 2013c) and Wielkopolska-Kujawska Lowland (Olszewski et al. 2013c, Pawlikowski & Olszewski 2019, Straka 2016).

**215. *T. fulvitaris* (A. Costa, 1867)**

New records from the Małopolska Upland (Kowalczyk et al. 2009b, Kowalczyk et al. 2011, Kowalczyk & Nadolski 2007, Olszewski et al. 2013d), Masurian Lakeland, Podlasie (Olszewski et al. 2013d), Mazovian Lowland (Kowalczyk & Kurzac 2007b, Kowalczyk & Kurzac 2009, Wiśniowski & Szczepko 2013, Szczepko 2013), Pomeranian Lakeland (Ciechanowski et al. 2004, Olszewski & Kowalczyk 2019) and Wielkopolska-Kujawy Lowland (Kowalczyk et al. 2009a, Olszewski et al. 2013d, Pawlikowski & Olszewski 2019, Twerd et al. 2017).

RL: Current category of threat LC, previously EX? (Skibińska 2002).

**216. *T. helveticus* Kohl, 1885**

Since 2004 recorded from the Małopolska Upland (Kowalczyk et al. 2008, Kowalczyk & Szczepko 2008a, Kowalczyk & Szczepko 2008b, Szczepko &

Wiśniowski 2009), Mazovian Lowland (Szczepko 2013, Wiśniowski & Szczepko 2013), Pomeranian Lakeland (Ciechanowski et al. 2004, Olszewski & Kowalczyk 2019) and Wielkopolska-Kujawy Lowland (Kowalczyk et al. 2009a, Pawlikowski & Olszewski 2019, Wendzonka 2011).

? *T. jokischianus* (Panzer, 1809)

Restored from synonymy, known from Baltic Coast, Białowieża Primeval Forest, Małopolska Upland, Pomeranian Lakeland, Upper Silesia, Western Beskid Mts and Wielkopolska-Kujawy Lowland (Straka 2016).

Remarks: The status of the species needs further verification.

217. *T. nigripennis* (Spinola, 1808)

Restored from synonymy, known from Wielkopolska-Kujawy Lowland (Straka 2016).

218. *T. nitidus* (Spinola, 1806)

Since 2004 recorded from the Baltic Coast (Kowalczyk & Twerd 2011, Olszewski & Kowalczyk 2019), Małopolska Upland (Kowalczyk et al. 2008, Kowalczyk & Kurzac 2005, Kowalczyk Nadolski 2007, Kowalczyk & Szczepko 2008a, Kowalczyk & Szczepko 2008b, Szczepko & Wiśniowski 2009), Mazovian Lowland (Kowalczyk & Kurzac 2007b, Kowalczyk & Kurzac 2009, Szczepko 2013, Wiśniowski & Szczepko 2013) and Wielkopolska-Kujawy Lowland (Kowalczyk et al. 2009a, Pawlikowski & Olszewski 2019, Twerd et al. 2017).

? *T. nobilis* (Straka 2016)

This species was described on the basis of materials from Bulgaria, the Czech Republic, Hungary, Poland, Slovakia and Turkey (Straka 2016). Reported in Poland from Baltic Coast, Kraków-Wieluń Upland, Małopolska Upland and Wielkopolska-Kujawy Lowland (Straka 2016).

Remarks: The status of the species needs further verification.

219. *T. obscuripennis* (Schenck, 1857)

New records from the Baltic Coast (Kowalczyk & Twerd 2011, Olszewski & Kowalczyk 2019), Małopolska Upland (Kowalczyk et al. 2008, Kowalczyk & Kurzac 2005, Kowalczyk & Szczepko 2008a, Szczepko & Wiśniowski 2009), Masurian Lakeland (P. Olszewski, unpublished data), Mazovian Lowland (Kowalczyk & Kurzac 2007b, Kowalczyk & Kurzac 2009, Szczepko 2013, Wiśniowski & Szczepko 2013), Podlasie (Wiśniowski & Piotrowski 2013), Pomeranian Lakeland (Olszewski & Kowalczyk 2019) and Wielkopolska-Kujawy Lowland (Pawlikowski & Olszewski 2019).

220. *T. panzeri* (Vander Linden, 1829)

New records from the Małopolska Upland (Kowalczyk et al. 2008, Szczepko & Wiśniowski 2009), Masurian Lakeland (P. Olszewski, unpublished data), Pomeranian Lakeland (Olszewski & Kowalczyk 2019), Upper Silesia (B. Wiśniowski, unpublished data) and Wielkopolska-Kujawy Lowland (Pawlikowski & Olszewski 2019).

221. *T. pompiliformis* (Panzer, 1803)

New records from the Baltic Coast (Kowalczyk & Twerd 2011, Olszewski & Kowalczyk 2019), Małopolska Upland (Kowalczyk et al. 2008, Kowalczyk & Kurzac 2005, Kowalczyk & Nadolski 2007, Kowalczyk & Szczepko 2008a, Kowalczyk & Szczepko 2008b, Szczepko & Wiśniowski 2009), Masurian Lakeland (P. Olszewski, unpublished data), Mazovian Lowland (Kowalczyk & Kurzac 2007b, Kowalczyk & Kurzac 2009, Szczepko 2013, Wiśniowski & Szczepko 2013), Podlasie (Wiśniowski & Piotrowski 2013) and Wielkopolska-Kujawy Lowland (Kowalczyk et al. 2009a, Pawlikowski & Olszewski 2019, Twerd et al. 2017).

222. *T. psammobius* (Kohl, 1880)

Recently, the species was recorded from the Baltic Coast (Kowalczyk & Twerd 2011, Olszewski & Kowalczyk 2019), Małopolska Upland (Kowalczyk & Kurzac 2005, Kowalczyk & Nadolski 2007, Kowalczyk & Szczepko 2008a, Kowalczyk & Szczepko 2008b, Soszyński et al. 2008), Masurian Lakeland (Olszewski 2014), Mazovian Lowland (Kowalczyk & Kurzac 2007b, Kowalczyk & Kurzac 2009, Szczepko 2013, Wiśniowski & Szczepko 2013) and Wielkopolska-Kujawy Lowland (Kowalczyk et al. 2009a, Pawlikowski & Olszewski 2019, Twerd et al. 2017).

RL: Current category of threat LC, previously NT (Skibińska 2002).

223. *T. tarsinus* (Lepelletier de Saint-Fargeau, 1845)

New records from the Masurian Lakeland (P. Olszewski, unpublished data) and Wielkopolska-Kujawy Lowland (Olszewski et al. 2013d, Pawlikowski & Olszewski 2019).

RL: Maintained category DD (Skibińska 2002).

224. *T. unicolor* (Panzer, 1809)

Recently, the species was recorded from the Baltic Coast (Olszewski & Kowalczyk 2019), Mazovian Lowland (Szczepko 2013, Wiśniowski & Szczepko 2013) and Wielkopolska-Kujawy Lowland (Pawlikowski & Olszewski 2019, Twerd et al. 2017).

### Genus *Tachytes* Panzer, 1806

#### 225. *T. panzeri* (Dufour, 1841)

Since 2004 recorded from the Białowieża Primeval Forest, Lublin Upland (B. Wiśniowski, unpublished data), Podlasie (Wiśniowski & Piotrowski 2013) and Wielkopolska-Kujawska Lowland (Wendzonka & Żurawlew 2020).

### Genus *Trypoxylon* Latreille, 1796

#### 226. *T. attenuatum* F. Smith, 1851

Recently, the species was recorded from the Małopolska Upland (Kowalczyk et al. 2008, Kowalczyk & Nadolski 2007, Szczepko & Wiśniowski 2009), Mazovian Lowland (Kowalczyk & Kurzac 2007b, Szczepko 2013, Wiśniowski & Szczepko 2013), Pomeranian Lakeland (P. Olszewski, unpublished data) and Wielkopolska-Kujawy Lowland (Twerd et al. 2017).

#### 227. *T. clavicerum* Lepeletier de Saint Fargeau & Audinet-Serville, 1825 = *Trypoxylon kostylevi* Antropov, 1985

Based on research DNA barcoding from both putative species from four countries Schmid-Egger et al. (2018) suggested the synonymy of the two species.

New records from the Baltic Coast (Olszewski & Kowalczyk 2019), Małopolska Upland (Kowalczyk et al. 2008, Kowalczyk & Kurzac 2005, Kowalczyk & Szczepko 2008a, Szczepko & Wiśniowski 2009), Masurian Lakeland (Olszewski & Pawlikowski 2014), Mazovian Lowland (Kowalczyk & Kurzac 2007b, Kowalczyk & Kurzac 2009, Szczepko 2013, Wiśniowski & Szczepko 2013) and Wielkopolska-Kujawy Lowland (P. Olszewski, unpublished data).

#### 228. *T. deceptorium* Antropov, 1991

Recently, the species was recorded from the Mazovian Lowland (Szczepko 2013, Wiśniowski & Szczepko 2013) and Wielkopolska-Kujawy Lowland (Twerd et al. 2017, Wendzonka & Żurawlew 2020).

#### 229. *T. figulus* (Linnaeus, 1758)

Since 2004 known from the Baltic Coast (Olszewski & Kowalczyk 2019), Małopolska Upland (Kowalczyk et al. 2008, Kowalczyk & Kurzac 2005, Kowalczyk & Nadolski 2007, Kowalczyk & Szczepko 2008a, Kowalczyk & Szczepko 2008b, Szczepko & Wiśniowski 2009), Mazovian Lowland (Kowalczyk & Kurzac 2007a, Kowalczyk & Kurzac 2009, Szczepko 2013, Wiśniowski & Szczepko 2013), Podlasie (Wiśniowski & Piotrowski 2013), Pomeranian Lakeland (P. Olszewski, unpublished data) and Wielkopolska-Kujawy Lowland (Kowalczyk et al. 2009a, Twerd et al. 2017).

#### 230. *T. fronticorne* Gussakovskij, 1936

New records from the Małopolska Upland (Szczepko & Wiśniowski 2009), Mazovian Lowland (Szczepko 2013, Wiśniowski & Szczepko 2013), Podlasie (Celary & Plewa 2014) and Wielkopolska-Kujawy Lowland (Wendzonka & Żurawlew 2020).

#### 231. *T. kolazyi* Kohl, 1893

Known from the Eastern Beskid Mts (Noskiewicz Puławski 1960), Kraków-Wieluń Upland (Wiśniowski 2002), Mazovian Lowland (Skibińska 1982) and Sandomierz Basin (Wiśniowski & Kowalczyk 1998).

RL: Current category of threat VU, previously NT (Skibińska 2002).

#### 232. *T. medium* de Beaumont, 1945

New records from the Masurian Lakeland and Wielkopolska-Kujawy Lowland (P. Olszewski, unpublished data) and Mazovian Lowland (Szczepko 2013, Wiśniowski & Szczepko 2013).

#### 233. *T. minus* de Beaumont, 1945

Since 2004 known from the Baltic Coast, Pomeranian Lakeland (Olszewski & Kowalczyk 2019), Kraków-Wieluń Upland (Sawoniewicz & Wiśniowski 2007), Małopolska Upland (Kowalczyk & Nadolski 2007, Kowalczyk & Szczepko 2008a, Szczepko & Wiśniowski 2009), Masurian Lakeland (P. Olszewski, unpublished data), Mazovian Lowland (Kowalczyk & Kurzac 2007b, Szczepko 2013, Wiśniowski & Szczepko 2013) and Wielkopolska-Kujawy Lowland (Pawlikowski & Olszewski 2019, Twerd et al. 2017).

## Family Sphecidae

### Genus *Ammophila* W. Kirby, 1798

#### 234. *A. campestris* Latreille, 1809

New records from the Małopolska Upland (Kowalczyk et al. 2008, Kowalczyk et al. 2011, Szczepko & Wiśniowski 2009), Masurian Lakeland, Pomeranian Lakeland (P. Olszewski, unpublished data), Mazovian Lowland (Kowalczyk & Kurzac 2007b, Szczepko 2013, Wiśniowski & Szczepko 2013), Podlasie (Wiśniowski & Piotrowski 2013) and Wielkopolska-Kujawy Lowland (Kowalczyk et al. 2009a, Pawlikowski & Olszewski 2019, Twerd et al. 2017).

#### 235. *A. pubescens* Curtis, 1836

Since 2004 known from the Baltic Coast (Olszewski & Kowalczyk 2019), Małopolska Upland (Kowalczyk et al. 2008, Kowalczyk & Szczepko 2008a, Soszyński et al. 2008, Szczepko & Wiśniowski 2009), Masurian Lakeland, Wielkopolska-Kujawy Lowland (P. Olszewski, unpublished data), Mazo-

vian Lowland (Kowalczyk & Kurzac 2009, Szczepko 2013, Wiśniowski & Szczepko 2013) and Podlasie (Wiśniowski & Piotrowski 2013).

**236. *A. sabulosa* (Linnaeus, 1758)**

Recently, the species was recorded from the Baltic Coast (Ciechanowski et al. 2008, Olszewski & Kowalczyk 2019), Małopolska Upland (Kowalczyk et al. 2008, Kowalczyk & Kurzac 2005, Kowalczyk & Nadolski 2007, Kowalczyk & Szczepko 2008a, Kowalczyk & Szczepko 2008b, Szczepko & Wiśniowski 2009, 2010), Masurian Lakeland (P. Olszewski, unpublished data), Mazovian Lowland (Kowalczyk & Kurzac 2007b, Kowalczyk & Kurzac 2009, Szczepko 2013, Wiśniowski & Szczepko 2013), Podlasie (Wiśniowski & Piotrowski 2013), Pomeranian Lakeland (Olszewski & Kowalczyk 2019) and Wielkopolska-Kujawy Lowland (Kowalczyk et al. 2009a, Pawlikowski & Olszewski 2019, Twerd et al. 2017, Wendzonka 2011, Wendzonka 2012).

**Genus *Isodontia* (Patton, 1880)**

**? *I. mexicana* (de Saussure, 1867)**

**First record from Poland;** recorded from the Kraków-Wieluń Upland (Kraków, 50.083024 N, 19.876525 E, 1 ex. – 20 VI 2018, obs. M. Syratt). New records from the Lower Silesia (Żurawlew & Butrym 2021).

Remarks. This is a North American alien species, which has been spreading in Central and Southern Europe since 1980. Observed in Poland only once, probably introduced accidentally. The occurrence was not again confirmed, but it is probable that sooner or later a population of the species will establish in the Polish fauna.

**Genus *Podalonia* Fernald, 1927**

**237. *P. affinis* (W. Kirby, 1798)**

Recently, the species was recorded from the Baltic Coast (Ciechanowski et al. 2008, Olszewski & Kowalczyk 2019), Małopolska Upland (Kowalczyk et al. 2008, Kowalczyk & Kurzac 2005, Kowalczyk & Nadolski 2007, Kowalczyk & Szczepko 2008a, Kowalczyk & Szczepko 2008b, Szczepko & Wiśniowski 2009), Masurian Lakeland (P. Olszewski, unpublished data), Mazovian Lowland (Kowalczyk & Kurzac 2007b, Kowalczyk & Kurzac 2009, Szczepko 2013, Wiśniowski & Szczepko 2013), Podlasie (Wiśniowski & Piotrowski 2013), Pomeranian Lakeland (Olszewski & Kowalczyk 2019) and Wielkopolska-Kujawy Lowland (Kowalczyk et al. 2009a, Pawlikowski & Olszewski 2019, Twerd et al. 2017, Wendzonka 2012).

**238. *P. hirsuta* (Scopoli, 1763)**

New records from the Baltic Coast (Ciechanowski et al. 2008, Olszewski & Kowalczyk 2019), Małopolska Upland (Kowalczyk et al. 2008, Kowalczyk & Kurzac 2005, Kowalczyk & Nadolski 2007, Kowalczyk & Szczepko 2008a, Kowalczyk & Szczepko 2008b, Szczepko & Wiśniowski 2009), Masurian Lakeland (P. Olszewski, unpublished data), Mazovian Lowland (Kowalczyk & Kurzac 2007b, Kowalczyk & Kurzac 2009, Szczepko 2013, Wiśniowski & Szczepko 2013), Podlasie (Wiśniowski & Piotrowski 2013), Pomeranian Lakeland (Ciechanowski et al. 2004, Olszewski & Kowalczyk 2019) and Wielkopolska-Kujawy Lowland (Kowalczyk et al. 2009a, Twerd et al. 2017, Wendzonka 2011).

**239. *P. luffii* (E. Saunders, 1903)**

Since 2004 known from the Mazovian Lowland (Szczepko 2013, Wiśniowski & Szczepko 2013), Małopolska Upland (Soszyński et al. 2008), Upper Silesia (B. Wiśniowski, unpublished data) and Wielkopolska-Kujawy Lowland (Pawlikowski & Olszewski 2019).

**Genus *Prionyx* Vander Linden, 1837**

**240. *P. subfuscatus* (Dahlbom, 1845)**

Records only from the Sandomierz Basin (Noskiewicz 1957).

RL: Current category of threat CR, previously NT (Skibińska 2002).

**Genus *Sceliphron* Klug, 1801**

**? *S. caementarium* (Drury, 1773)**

Recorded from the Bieszczady Mts (Kosibowicz, 2021). Permanent occurrence of the species in Poland requires confirmation.

**241. *S. curvatum* (F. Smith, 1870)**

Alien species, spreading in Poland in the last years, new records in the following regions: Bieszczady Mts, Eastern Beskidy Mts, Sandomierz Lowland, Western Beskid Mts (Bilański et al. 2014), Eastern Sudetes Mts, Western Sudetes Mts (Zajac et al. 2019), Lower Silesia (Bilański et al. 2014, Olszewski et al. 2013d, Zajac et al. 2019), Kraków-Wieluń Upland (Bilański et al. 2014, Olszewski et al. 2013d), Lublin Upland (Bury et al. 2009), Mazovian Lowland (Wiśniowski et al. 2013), Małopolska Upland (Gwardjan & Celary 2020), Sandomierz Basin (Bilański et al. 2014, Bury et al. 2009), Pieniny Mts (Bilański et al. 2014, Olszewski et al. 2013d, Wiśniowski et al. 2013) and Upper Silesia (Dobosz 2010).

**242. *S. destillatorium* (Illiger, 1807)**

Species expanding its known range. New records in the following regions: Bieszczady mountains

(Bilański et al. 2012, Bury et al. 2009, Mader 2013), Eastern Beskid Mts, Sandomierz Basin (Bilański et al. 2012, Bury et al. 2009, Mader 2013, Wiśniowski et al. 2013), Kraków-Wieluń Upland (Wiśniowski et al. 2013), Lower Silesia (Zajac et al. 2019), Lubelska Upland (Bilański et al. 2012, Bury 2009, Wiśniowski et al. 2013), Małopolska Upland (Bilański et al. 2012, Gwardjan & Celary 2020, Kowalczyk et al. 2009b, Mader 2013, Miłkowski & Buchholz 2016, Wiśniowski et al. 2013), Nowotarska Basin (Bilański et al. 2012, Pietraszko-Warchałowska & Warchałowski 2019), Pieniny Mts, Podlasie Lowland (Wiśniowski et al. 2013), Roztocze (Bury et al. 2009, Mader 2013, Wiśniowski et al. 2013), Świętokrzyskie Mts (Bilański et al. 2012, Miłkowski & Buchholz 2016), Upper Silesia (Bilański et al. 2012), Western Beskid Mts (Bilański et al. 2012, Jarosiewicz 2012, Mader 2013, Wiśniowski et al. 2013) and Western Sudetes Mts (Tatur-Dytkowski 2015).

RL: Current category of threat LC, previously NT (Skibińska 2002).

### Genus *SpheX* Linnaeus, 1758

#### 243. *S. funerarius* Gussakovskij, 1934

New records from the Kraków-Wieluń Upland, Małopolska Upland (Olszewski et al. 2013d, Zubek & Celary 2019), Masurian Lakeland (Szymkiewicz & Szymkiewicz 2014), Pomeranian Lakeland (P. Olszewski, unpublished data), Świętokrzyskie Mts (Zubek & Celary 2019), Upper Silesia (Olszewski et al. 2013d) and Wielkopolska-Kujawy Lowland (Olszewski et al. 2013d, Pawlikowski & Olszewski 2019).

### Acknowledgements

We would like to thank Vera Antonova, Jolanta Bąk-Badowska, Marek L. Borowiec, Jan K. Kowalczyk, Lucyna Twerd, Hanna Piekarska-Boniecka, Janusz Sawoniewicz, Maksymilian Syratt and Dominique Zimmermann for information about sphecids wasps and making available their collections to our study.

### References

- Banaszak, J. 1980. Złotolitki – Chrysididae. Katalog Fauny Polski XXVI, 3. 52 pp., Warszawa.
- Blüthgen, J. 1954. Neues oder Wissenswertes über mitteleuropäische Aculeaten und Goldwespen III (Hym.). Bonner Zoologische Beiträge 5: 139-155.
- Bilański, P., Kołodziej, Z. & Pająk, M. 2012. Distribution of *Sceliphron destillatorium* Illiger, 1807 (Hymenoptera, Sphecidae) in Poland. Fragmenta Faunistica 55: 131-137.
- , Kołodziej, Z. & Bury, J. 2014. Distribution of *Sceliphron curvatum* Smith, 1870 (Hymenoptera, Sphecidae) in Poland. Polish Journal of Entomology 83: 109-119.
- Bitsch, J. & Leclercq, J. 1993. Faune de France. France et régions limitrophes. 79. Hyménoptères Sphecidae d'Europe occidentale. Volume 1. Généralités – Crabroninae. 325 pp., Paris (Fédération Française des Sociétés de Sciences Naturelles).
- Bury, J., Sudoł, D., Zięba, P. & Żyła, W. 2009. Nowe dane o występowaniu przedstawicieli rodzaju *Sceliphron* Klug, 1801 (Hymenoptera, Sphecidae) na terenie Polski. Acta Entomologica Silesiana 17: 11-18.
- Celary, W. 1997. Sphecoidea. Pp. 57-61 in: Razowski, J. (ed.). Wykaz zwierząt Polski 5. Kraków (Instytut Systematyki i Ewolucji Zwierząt PAN).
- & Plewa, R. 2014. Materiały do znajomości żądłówek (Hymenoptera: Apocrita: Aculeata) występujących w drzewostanach dębowych. Wiadomości Entomologiczne 31 (1): 42-49.
- Ciechanowski, M., Kowalczyk, J. K. & Błażuk, J. 2004. Waloryzacja rezerwatów roślinności kserotermicznej "Biała Góra", "Kwidzińskie Ostnice" i "Miłachowo" (woj. pomorskie) w oparciu o wybrane elementy fauny (Insecta, Amphibia, Reptilia, Aves, Mammalia). Przegląd Przyrodniczy 15 (3-4): 83-108.
- , Kowalczyk, J. K., Przesmycka, A. & Wójcik, C. 2008. Fortyfikacje Grodziska w Gdańsku jako ostoja różnorodności fauny w krajobrazie wielkomięjskim. Pp. 547-555 in: Indykiewicz, P., Jerzak, L. & Barczak, T. (ed.). Fauna miast. Ochronić różnorodność biotyczną. Bydgoszcz (SAR „Pomorze”).
- Guichard, K. M. 1993. European *Oxybelus* with a note on *Oxybelus dusmeti* Perez, 1966 (Hymenoptera, Sphecidae). Entomofauna 15: 529-536.
- Gwardjan, M. & Celary, W. 2020. Nowe dane o występowaniu gliniarza murowego *Sceliphron curvatum* (Smith, 1870) i gliniarza naściennego *Sceliphron destillatorium* Illiger, 1807 (Hymenoptera, Sphecidae) na Wyżynie Małopolskiej. Naturalia 6: 114-120.
- Dobosz, R. 2010. Pierwsze stanowisko *Sceliphron curvatum* (Smith, 1870) (Hymenoptera: Sphecidae) na Górnym Śląsku. Acta Entomologica Silesiana 18: 89.
- Dollfuss, H. 2008. The Crabronid wasps of the genus *Oxybelus* Latreille 1796 and *Brimocelus* Arnold 1927 of „Biologiezentrum Linz” collection in Linz, Austria (Hymenoptera, Apoidea, Crabronidae). Linzer Biologische Beiträge 40: 463-505.
- Głowacki, J. 1953. Przyczynek do znajomości błonkówki (Hymenoptera) okolic Warszawy. Fragmenta Faunistica Musei Zoologici Polonici 6: 501-523.
- Jacobs, H.-J. 2007. Die Grabwespen Deutschlands. Ampulicidae, Sphecidae, Crabronidae. Tierwelt Deutschlands, Hymenoptera III, 79. Teil. 207 pp., Keltern (Goecke & Evers).
- Jarosiewicz, G. 2012. Nowe stanowisko *Sceliphron destillatorium* Illiger, 1807 (Hymenoptera, Sphecidae) w Beskidzie Zachodnim. Acta Entomologica Silesiana 20: 89.



- Kosibowicz, M. 2021. Pierwsze stwierdzenie *Sceliphron caementarium* (Drury, 1770) (Hymenoptera: Sphecidae) w Polsce. *Wiadomości Entomologiczne* 40(3); online 8N: 1–2. doi:10.5281/zenodo.5336429
- Kowalczyk, J. K. 1988. Nowe stanowiska w Polsce interesujących gatunków żądłówek Hymenoptera, Aculeata. *Przegląd Zoologiczny* 32: 321–323.
- 2004. Żądłówki (Hymenoptera: Aculeata). Pp. 87–89 in: Ciechanowski, M., Fałtynowicz, W. & Zieliński, S. (eds). *Przyroda projektowanego rezerwatu „Dolina Mirachowskiej Strugi” na Pojezierzu Kaszubskim*. Acta Botanica Cassubica 4.
- 2006. Łysa Polana w Sopocie. *Gawron* 1: 26–29.
- & Kurzac, T. 2005. Żądłówki (Hymenoptera, Aculeata) Ogrodu Botanicznego w Łodzi. *Biuletyn Ogrodów Botanicznych* 14: 101–113.
- & Kurzac, T. 2007a. Chronione, zagrożone i rzadkie gatunki owadów w rezerwacie Polana Siwica w Bolimowskim Parku Krajobrazowym. *Chrońmy Przyrodę Ojczystą* 63: 60–69.
- & Kurzac, T. 2007b. Stan poznania rodzin żądłówek (Hymenoptera, Aculeata) Parku Krajobrazowego Wzniesień Łódzkich. *Parki Narodowe i Rezerwaty Przyrody* 26(2): 59–74.
- & Kurzac, T. 2009. Żądłówki (Hymenoptera, Aculeata) rezerwatu „Polana Siwica” i terenów przyległych w Bolimowskim Parku Krajobrazowym. *Parki Narodowe i Rezerwaty Przyrody* 28(4): 25–40.
- & Nadolski, J. 2007. Żądłówki (Hymenoptera, Aculeata) terenów kolejowych w Łodzi. *Wiadomości Entomologiczne* 26(4): 279–288.
- & Szczepko, K. 2008a. Contribution to the knowledge of Aculeata (Hymenoptera) of łódzkie voivodeship. *Acta Universitatis Lodzianensis, Folia Biologica et Oecologica* 4: 147–166.
- & Szczepko, K. 2008b. Actual list of Aculeata (Hymenoptera) of the Łódź city. *Acta Universitatis Lodzianensis, Folia Biologica et Oecologica* 4: 127–146.
- & Twerd, L. 2011. Aculeata and other interesting insects of empty land in the city of Gdynia (Poland). Pp. 261–267 in: Indykiewicz, P., Jerzak, L., Böhner, J. & Kavanagh, B. (eds). *Urban fauna. Studies of animal biology, ecology and conservation in European cities*. Bydgoszcz (University of Technology and Life Sciences in Bydgoszcz).
- , Kurzac, T. & Nadolski, J. 2009a. Żądłówki (Hymenoptera, Aculeata) wybranych obszarów chronionych w Parku Krajobrazowym Międzyrzeczka Warty i Widawki. *Parki Narodowe i Rezerwaty Przyrody* 28(2): 57–72.
- , Kurzac, T. & Soszyński, B. 2009b. Nowe stanowiska interesujących gatunków żądłówek (Hymenoptera, Aculeata) w regionie Łódzkim. *Parki Narodowe i Rezerwaty Przyrody* 28(2): 127–134.
- , Kurzac, T. & Twerd, L. 2011. Sports ground in Łódź as an important area for rare and threatened Aculeata (Hymenoptera). Pp 269–275 in: Indykiewicz, P., Jerzak, L., Böhner, J. & Kavanagh, B. (eds). *Fauna miast. Studies of animal biology, ecology and conservation in European cities*. Bydgoszcz.
- , Soszyński, B., Galińska, E. & Kurzac, T. 2008. Materiały do znajomości żądłówek (Hymenoptera, Aculeata) Spalskiego Parku Krajobrazowego i terenów przyległych. *Parki Narodowe i Rezerwaty Przyrody* 27(3): 51–62.
- Krysiński, S. 1956/1957. Uwagi o faunie żądłówek (Hymenoptera, Aculeata) okolic Przemysła. *Polskie Pismo Entomologiczne* 26: 303–309.
- Łoziński, P. 1920. Przyczynek do fauny grzebaczy (Sphegidae) okolic Krakowa i zachodniej części Małopolski. *Sprawozdania Komisji fizjograficznej, PAU* 53/54: 120–122.
- Mader, D. 2013. Biogeography and migration of the mud-dauber *Sceliphron destillatorium* (Hymenoptera: Sphecidae) in Poland and surrounding countries in Europe. 236 pp., Walldorf (Mader Verlag).
- Miłkowski, M. & Buchholz, L. 2016. *Sceliphron destillatorium* (Illiger, 1807) (Hymenoptera: Sphecidae) – nowe stanowiska na Wyżynie Małopolskiej i w Górach Świętokrzyskich. *Kulon* 21: 81–82.
- Mokrousov, M. & Popov, I. 2016. Digger Wasps (Hymenoptera, Apoidea: Ampulicidae, Sphecidae, Crabronidae) of the Black Sea Coast of Krasnodar Territory, Abkhazia, and Adjacent Areas. *Entomological Review* 96: 559–599.
- Noskiewicz, J. 1957. Osiągnięcia polskiej entomologii (faunistyka, zoogeografia, systematyka) w trzyleciu 1953–1956. *Przegląd Zoologiczny* 1: 155–165.
- & Puławski, W. 1960. Grzebaczowate Sphecidae. Klucze do oznaczania owadów Polski. Cz. XXIV. 185 pp., Błonkówki Hymenoptera Z. 67, Warszawa.
- Olszewski, P. 2014. Potwierdzenie występowania trętwisza – *Mimumesa littoralis* (Bondroit, 1934) (Hymenoptera: Crabronidae) w Polsce. *Chrońmy Przyrodę Ojczystą* 70(2): 171–173.
- & Kowalczyk, K. 2019. Contribution to the knowledge of digger wasps (Hymenoptera: Crabronidae, Sphecidae) of Gdańsk Pomerania. *Fragmenta Faunistica* 62(2): 87–115.
- & Pawlikowski, T. 2013. *Passaloecus pictus* Ribaut, 1952 (Hymenoptera: Crabronidae) – pierwsze stwierdzenie w Polsce. *Wiadomości Entomologiczne* 32(4): 266–269.
- & Pawlikowski, T. 2014. *Trypoxylon kostylevi* Antropov, 1985 (Hymenoptera: Crabronidae) – a new species for Poland – and a key to Polish species of *Trypoxylon* Latreille, 1796. *Polish Journal of Entomology* 83: 189–199.
- & Wendzonka, J. 2014. Nowe stanowiska grzebacza wielkiego *Ectemnius fossorius* (Hymenoptera: Crabronidae) w Polsce. *Chrońmy Przyrodę Ojczystą* 70(4): 351–354.
- , Bogusch, P. & Szpila, K. 2021a. Life history of *Oxybelus variegatus* Wesmael, 1852 (Hymenoptera: Crabronidae) with a description of the mature larva. *Insects* 12(2): 100. doi:10.3390/insects12020100
- , Bogusch, P., Mięskowski, M., Baños-Picón, L. & Puchałka, R. 2021b. Behavioural and ecological data on *Dryudella stigma* (Panzer, 1809) (Hymenoptera: Astatidae) with the first description of the mature larva. *Journal of Hymenoptera Research* 82: 305–316.

- , Ljubomirov, T., Wiśniowski, B., Kowalczyk, J. K. & Krzyżyński, M. 2016. New records of the genus *Diodontus* Curtis, 1834 (Hymenoptera: Crabronidae) from Bulgaria, Montenegro and Poland, with a key to Central and Eastern European species. *Zootaxa* 4061 (2): 164–172.
- , Pawlikowski, T. & Piekarska-Boniecka, H. 2013a. *Nysson distinguendus* Chevrier, 1867 (Hymenoptera: Crabronidae), a new species to the fauna of Poland. *Fragmenta Faunistica* 56 (1): 43–46.
- , Twerd, L. & Kowalczyk, J. K. 2017. New records and rare species of digger wasps from Poland (Hymenoptera, Crabronidae). *Spixiana* 40 (2): 193–196.
- , Wiśniowski, B., Kostro-Ambroziak, A., Pawlikowski, T. & Piekarska-Boniecka, H. 2013b. *Psenulus meridionalis* Beaumont, 1937, a digger wasp species new to the fauna of Poland (Hymenoptera: Crabronidae). *Fragmenta Faunistica* 56 (1): 39–42.
- , Wiśniowski, B., Pawlikowski, T. & Straka, J. 2013c. *Tachysphex austriacus* Kohl, 1892 (Hymenoptera: Crabronidae) w Polsce. *Wiadomości Entomologiczne* 32 (3): 202–206.
- , Wiśniowski, B., Pawlikowski, T. & Szpila, K. 2013d. Nowe dane o niektórych rzadkich żądłówkach w Polsce (Hymenoptera: Aculeata). *Wiadomości Entomologiczne* 32 (2): 127–138.
- , Wiśniowski, B. & Szczepko, K. 2014. Nowe dane o rozmieszczeniu przedstawicieli rodzaju *Miscophus* Jurine, 1807 (Hymenoptera: Crabronidae) w Polsce. *Wiadomości Entomologiczne* 33 (1): 61–67.
- Pawlikowski, T. & Olszewski, P. 2019. Grzebaczowate (Sphecidae, Crabronidae), osowate (Vespidae) i pszczoły (Apiformes). Pp. 193–222 in: Sewerniak, P. & Holc, J. (eds). *Przyroda poligonu toruńskiego: Stan badań i problemy ochrony*. Toruń (Wydawnictwo Uniwersytetu Mikołaja Kopernika).
- Pietraszko-Warchałowska, M. & Warchałowski, M. 2019. Wtyk amerykański *Leptoglossus occidentalis* (Heidemann, 1910) (Hemiptera: Coreidae) oraz glińniarz nasienny (jaskólec wschodni) *Sceliphron destillatorium* (Illiger, 1807) (Hymenoptera: Sphecidae) – pierwsze stwierdzenia gatunków w Zakopanem. *Wiadomości Entomologiczne* 38 (1): 53–56.
- Plewka, T. 1981. Niektóre interesujące gatunki owadów fauny Kampinoskiego Parku Narodowego. Pp. 91–93 in: Sandner, W. (eds). *Entomologia a gospodarka narodowa*. 310 pp., Warszawa (PWN).
- Pulawski, W. 2021. Catalog of Sphecidae. California Academy of Sciences, San Francisco. Available online: <https://www.calacademy.org/scientists/projects/catalog-of-sphécidae> [accessed 18 January 2021].
- Sann, M., Niehuis, O., Peters, R., Mayer, C., Kozlov, A., Podsiadłowski, L., Bank, S., Meusemann, K., Misof, B., Bleidorn, C. & Ohl, M. 2018. Phylogenomic analysis of Apoidea sheds new light on the sister group of bees. *BMC Evolutionary Biology* 18 (1): 71. doi:10.1186/s12862-018-1155-8.
- Sawoniewicz, J. & Wiśniowski, B. 2007. Materiały do znajomości gąsienicznikowatych (Hymenoptera: Ichneumonidae) pasożytujących na żądłówkach (Hymenoptera: Aculeata) w Polsce. *Wiadomości Entomologiczne* 26 (1): 27–33.
- Skibińska, E. 1982. Sphecidae (Hymenoptera) of Warsaw and Mazovia. *Memorabilia Zoologica* 36: 103–127.
- 1986. Structure of Sphecidae (Hymenoptera) communities in urban green areas in Warsaw. *Memorabilia Zoologica* 41: 141–202.
- 2002. Sphecidae Grzebaczowate. Pp. 66–68 in: Głowaciński, Z. (ed.). *Red list of threatened animals in Poland*. Kraków (Instytut Ochrony Przyrody Polskiej Akademii Nauk).
- 2004. Ampulicidae, p. 354; Crabronidae, pp. 354–357, Sphecidae, pp. 357–358 in: Bogdanowicz, W., Chudzińska, E., Pilipiuk, I. & Skibińska, E. (eds). *Fauna Polski. Charakterystyka i wykaz gatunków – Fauna of Poland. Characteristic and checklist of species*. Tom I – Volume I. Annelida, Arthropoda pro parte, Insecta pro parte (Coleoptera, Hemiptera, Hymenoptera, Lepidoptera). 509 pp., Warszawa (Muzeum i Instytut Zoologii PAN).
- Soszyński, B., Kowalczyk, J. K., Mielczarek, Ł., Mocariski, Z., Osicki, T. & Sobczak, S. 2008. Owady. Pp. 140–153 in: Wnuk, Z. (ed.). *Przedborski Park Krajobrazowy 20 lat istnienia PPK (1988–2008)*. 247 pp., Rzeszów (Wydawnictwo Uniwersytetu Rzeszowskiego).
- Straka, J. 2016. *Tachysphex austriacus* Kohl, 1892 and *T. pompiliformis* (Panzer, 1804) (Hymenoptera, Crabronidae) are a complex of fourteen species in Europe and Turkey. *ZooKeys* 577: 63–123.
- Szczepko, K. 2013. Ekologia grzebaczowatych (Hymenoptera, Apoidea, Spheciformes) odłogów w Kampinoskim Parku Narodowym. 168 pp., Łódź (Wydawnictwo Uniwersytetu Łódzkiego).
- & Wiśniowski, B. 2009. Żądłówki (Hymenoptera: Aculeata). Pp. 61–78 in: Jaskuła, R. & Tończyk, G. (eds). *Owady (Insecta) Spalskiego Parku Krajobrazowego, tom I. Spała (Mazowiecko-Świętokrzyskie Towarzystwo Ornitologiczne)*.
- & Wiśniowski, B. 2010. Żądłówki (Hymenoptera: Aculeata). Pp. 103–124 in: Jaskuła, R. & Tończyk, G. (eds). *Owady (Insecta) Parku Krajobrazowego Wzniesień Łódzkich*. Łódź (Dyrekcja Parku Krajobrazowego Wzniesień Łódzkich/Mazowiecko-Świętokrzyskie Towarzystwo Ornitologiczne).
- Schmid-Egger, C. 2016. The *Psenulus pallipes* species group in Central Europe (Hymenoptera, Crabronidae). *Ampulex* 8: 40–44.
- , Straka, J., Ljubomirov, T., Blagoev, G. A., Morinière, J. & Schmidt, S. 2018. DNA barcodes identify 99 per cent of apoid wasp species (Hymenoptera: Ampulicidae, Crabronidae, Sphecidae) from the Western Palearctic. *Molecular Ecology Resources* 19 (2): 476–484.
- Szulczewski, J. W. 1947. Pół wieku spostrzeżeń nad stepowieniem Wielkopolski. Pp. 200–206 in: Wodziczko, A. (ed.). *Stepowienie Wielkopolski I. Prace Komisji Matematyczno-Przyrodniczej, Poznańskie Towarzystwo Przyjaciół Nauk, Ser. B, 10 (4)*.

- 1950. Błonkówki (Hymenoptera) Wielkopolskiego Parku Narodowego. Część IV. Żądłowki (Aculeata, Chrysididae, Sapygidae, Mutillidae, Scoliidae, Vespidae, Psammocharidae, Sphegidae). Prace Monograficzne nad Przyrodą Wielkopolskiego Parku Narodowego pod Poznaniem 2: 90–110.
- Szymkiewicz, M. & Szymkiewicz, E. 2014. Stanowiska świerszczojada *Sphex funerarius* (Gussakovskij 1934) (Hymenoptera: Sphecidae) na Pojezierzu Mazurskim. Kulon 19: 133–135.
- Tatur-Dytkowski, D. 2015. *Sceliphron destillatorium* (Illiger, 1807) (Hymenoptera: Sphecidae) – nowy dla Sudetów Zachodnich gatunek grzebacza. Wiadomości Entomologiczne 34: 74.
- Twerd, L., Krzyżyński, M., Waldon-Rudziołek, B. & Olszewski, P. 2017. Can soda ash dumping grounds provide replacement habitats for digger wasps (Hymenoptera, Apoidea, Spheciformes)? PLoS ONE 12(4): 1–17.
- Wendzonka, J. 2011. Wybrane grupy żądłówek (Hymenoptera, Aculeata) użytku ekologicznego „Jaskółca Skarpa” w Sierakowskim Parku Krajobrazowym. Biuletyn Parków Krajobrazowych Wielkopolski 17(19): 83–89.
- 2012. Sawczynka piaskowa (*Parnopes grandior* Pall.) oraz inne żądłowki (Aculeata) w Nadwarciańskim Parku Krajobrazowym. Biuletyn Parków Krajobrazowych Wielkopolski 18(20): 105–112.
- & Żurawlew, P. 2020. Erstnachweis von *Nysson hrubanti* Balthasar, 1972 in Polen (Hymenoptera, Crabronidae). Ampulex 11: 55–57.
- Wiśniowski, B. 1993. Nowe dla Polski i rzadkie gatunki błonkówek (Hymenoptera, Apocrita) z terenu Ojcowskiego Parku Narodowego. Przegląd Zoologiczny 37: 277–282.
- 2002. Żądłowki z rodzin Tiphidae, Sapygidae, Mutillidae, Pompilidae, Eumenidae, Vespidae i Sphecidae (Hymenoptera: Aculeata) Ojcowskiego Parku Narodowego. Cz. I. Wykaz gatunków i analiza zoogeograficzna. Parki Narodowe i Rezerwy Przyrody 21: 51–82.
- 2003. Two digger wasps of the genus *Pemphredon* Latreille, 1796 (Hymenoptera: Sphecidae) new to Poland, with an annotated checklist of the Polish species. Polish Journal of Entomology 72: 185–195.
- 2004. Annotated checklist of the Polish digger wasps (Hymenoptera: Sphecidae). Polish Journal of Entomology 73: 33–63.
- & Kowalczyk, K. 1998. Nowe dla Polski gatunki grzebaczy (Hymenoptera: Aculeata: Sphecidae) oraz nowe stanowiska gatunków rzadkich. Prądnik. Prace i Materiały Muzeum im. Prof. Władysława Szafera 11/12: 219–222.
- & Piotrowski, W. 2013. Materiały do poznania żądłówek (Hymenoptera, Aculeata) Poleskiego Parku Narodowego. Parki Narodowe i Rezerwy Przyrody 32: 17–62.
- & Szczepko, K. 2013. Żądłowki (Hymenoptera: Aculeata) Kampinoskiego Parku Narodowego. Cz. VI. Grzebaczowate (Spheciformes: Sphecidae, Crabronidae). Parki Narodowe i Rezerwy Przyrody 32: 17–62.
- , Huflejt, T., Babik, H., Czechowski, W. & Pawlikowski, T. 2013. New records of two alien mud daubers *Sceliphron destillatorium* (Ill.) and *Sceliphron curvatum* (Sm.) (Hymenoptera, Sphecidae) from Poland with comments on expansion of their ranges. Fragmenta Faunistica 56(1): 25–37.
- Zajac, K., Regner, J., Micholap, P., Smolis, A. & Kadej, M. 2019. Nowe stanowiska grzebaczy *Sceliphron destillatorium* (Illiger, 1807) i *Sceliphron curvatum* Smith, 1870 (Hymenoptera: Apoidea: Spheciformes) w południowo-zachodniej Polsce. Przyroda Sudeków 22: 119–128.
- Zubek, K. & Celary, W. 2019. Nowe stanowiska *Sphex funerarius* (Hymenoptera: Apoidea: Sphecidae). Biuletyn Sekcji Hymenopterologicznej PTE nr 27, Kielce: 13.
- Żurawlew, P. & Butrym, D. 2021. Obserwacje *Isodontia mexicana* (De Saussure, 1867) (Hymenoptera: Sphecidae) na Dolnym Śląsku. Wiadomości Entomologiczne 40(2): 5–6.
- Żyła, W. 2019. Potwierdzenie występowania *Larra anathema* (Rossi, 1790) (Hymenoptera: Crabronidae) w Polsce. Acta Entomologica Silesiana 27(008): 1–4 [online]. doi:10.5281/zenodo.2616221
- & Huflejt, T. 2020. *Crossocerus* (*Cuphopterus*) *subulatus* (Dahlbom, 1845) (Hymenoptera: Crabronidae) – nowy gatunek grzebacza w faunie Polski. Acta Entomologica Silesiana 28(024): 1–6 [online]. doi:10.5281/zenodo.4056974