

Scientific note

**Taxonomic identity of two *Pseudocellus* from Eastern Cuba**

(Arachnida, Ricinulei, Ricinoididae)

Rolando Teruel\*

The taxonomic definition of the Cuban ricinulid *Pseudocellus paradoxus* (Cooke, 1972) is currently unsatisfactory: two other taxa formerly described as separate species (*Cryptocellus cubanicus* Dumitresco & Juvara-Bals, 1973 and *Cryptocellus mayari* Armas, 1977) were regarded as its junior synonyms (Armas, 1980), but then suggested to be valid (Teruel & Pérez 2003, Teruel & Armas 2008).

Recently, the present author succeeded in collecting new samples of all three taxa (topotypes included) and examining the types of two of them. This revealed that *C. cubanicus* and *C. mayari* are valid species of the genus *Pseudocellus* Platnick, 1980 (this was never formally established because the genus *Pseudocellus* was described shortly after the synonymies were published). Thus, the following nomenclatural changes are herein proposed: 1) *Cryptocellus cubanicus* Dumitresco & Juvara-Bals, 1973, **restored name** = *Pseudocellus cubanicus* (Dumitresco & Juvara-Bals, 1973), **new combination**; 2) *Cryptocellus mayari* Armas, 1973, **restored name** = *Pseudocellus mayari* (Armas, 1973), **new combination**.

These species will be fully redescribed in a forthcoming paper (R. Teruel, in prep.), but their main diagnostic differences are given here as follows: *P. cubanicus* n. comb. is distinguished from *P. mayari* and *P. paradoxus* by its more slender body and appendages, paler

coloration, male leg II tibia apically curved inwards and male copulatory apparatus different; *P. mayari* n. comb. is diagnosed from *P. cubanicus* and *P. paradoxus* by its tergites XI–XII shorter and wider, leg II femur more swollen, and male copulatory apparatus different. Most of these differences are evident in Figure 1.

References

Armas, L. F. de 1977. Dos nuevas especies de *Cryptocellus* (Arachnida: Ricinulei) de Cuba. *Poeyana* 164: 1–11.  
 -- 1980. Situación taxonómica de *Cryptocellus paradoxus* Cooke, 1972 (Arachnida: Ricinulei). *Poeyana* 212: 1–4.  
 Dumitresco, M. & Juvara-Bals, I. 1973. *Cryptocellus cubanicus* n. sp. (Arachnida: Ricinulei). Premier représentant de la fam. Ricinuleidae de Cuba. Résultats des expéditions biospéologiques cubano-roumaines à Cuba. *Editura Academiei Republicii Socialiste România* 1: 259–275.  
 Teruel, R. & Armas, L. F. de 2008. Nuevo *Pseudocellus* Platnick 1980 de Cuba oriental y nuevos registros de *Pseudocellus paradoxus* (Cooke 1972) (Ricinulei: Ricinoididae). *Boletín de la Sociedad Entomológica Aragonesa* 43: 29–33.  
 -- & Pérez, Y. 2003. Distribución geográfica y variabilidad morfológica de *Pseudocellus paradoxus* (Cooke, 1972), con notas sobre su historia natural (Ricinulei: Ricinoididae). *Revista Ibérica de Aracnología*, 7: 177–182.

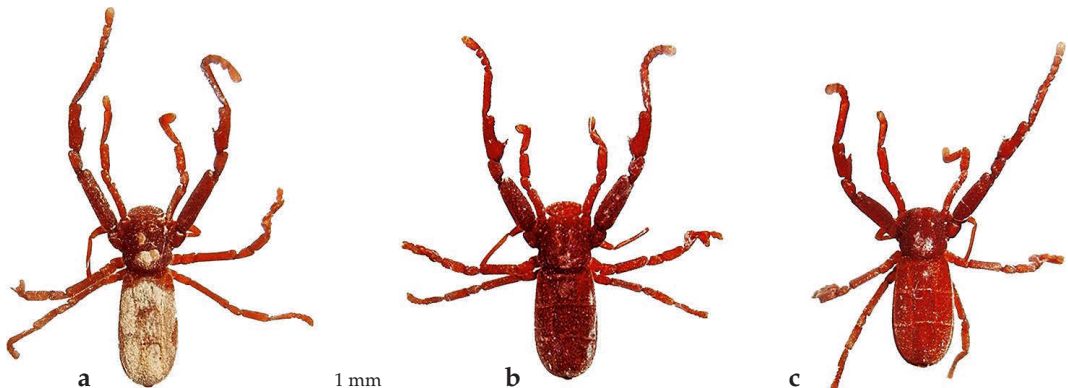


Fig. 1. Males of *P. cubanicus* n. comb. (a), *P. mayari* (b) and *P. paradoxus* (c).

\* Rolando Teruel, Centro Oriental de Ecosistemas y Biodiversidad, Museo de Historia Natural “Tomás Romay”, José A. Saco # 601, esquina a Barnada, Santiago de Cuba 90100, Cuba; e-mail: rteruel@bioeco.cu